



Volume 22 Issue 2
SUMMER 2025
21st EDITION

WEST END

SUCCESS IN MONACO FOR TWO TALENTED LOCAL BOYS



Two of our village residents both Year 6 pupils at Esher Church School recently took part in an International Rugby Tournament in Monaco.

Ronan O'Hare and Noah Turner, who play for Cobham Rugby Football Club, were selected from the club's large junior section, to represent the club at this incredible event.

24 teams, 21 countries, 1 passion: Rugby Noah and Ronan were part of the Cobham RFC U12's squad who represented England at The Sainte -Devote 2025 Tournament in Monaco, an international rugby 7's competition.

Organised by the Princess Charlene de Monaco Foundation, the tournament brings together young players from all over the world to celebrate rugby at its best - commitment, team spirit and inclusion.

England topped their group stage including a memorable win over New Zealand which included a Haka. They proceeded to the final meeting Belgium and the USA along the way setting up a final against France.



There were fireworks as the teams came out of the tunnel and walked through a guard of honour formed by all other teams who participated. The anthems followed in the presence of Prince Albert II and Princess Charlene. It was a fiercely fought final by England but in the end France were the winning side.

The boys returned with a wonderful cup after an amazing weekend of sport and lifelong memories made, they represented their school, club and country and West End Village with great distinction.

Cian O'Hare

Many congratulations to Ronan and Noah on their amazing success!

WEST END VILLAGE SHOW
ESTHER
Saturday 23rd August 2025
from 12.00pm

Garsons Smash a Plate
PoW Swans Rule Pond
Shape Any Size Dog Show
No Go Top Secret Marquee
Cricket Pitch Feel Lucky Raffle
Run for Fun

www.westendflowershow.co.uk

COME ALONG AND JOIN US FOR AN AFTERNOON OF FUN AT THE WEST END VILLAGE SHOW
SATURDAY 23rd AUGUST
From 12.00pm

See the Village Show attractions listed on Page 6

LOCAL WRITER'S SUCCESS

Another talented local writer, Rachel Gee, recently published her book of illustrated poems 'sea-swell—word on word wave'.

The launch of her book was held recently in the Sports and Social Club. It was a very special evening attended by many local visitors to support Rachel. £75 was raised for charity on the night.

Rachel's book is available to purchase at £10.00.

Enquiries to Rachel at rachel.poetry@hotmail.com or M: 07888 767474



Your invitation to the
Charity Gala Night
to enjoy an evening of Opera Classics
and Show Music performed by
four professional opera soloists
accompanied on keyboard
All seated in the marquee on
West End Village Green
at 7pm on
Bank Holiday Monday
25th August 2025
in aid of **Save the Children**

Tickets £25
Book by email
stcesher@gmail.com

Seats reserved for groups
of eight or more

Bring a group and
picnic on the green
beforehand

Doors open 6.30pm
Evening finishes around 9pm
West End Lane, Esher KT10 8LE



Save the Children

IMPORTANT PLEASE READ.....

Call 999 for Emergencies only.

Call 0800 555111 for Crimestoppers.

Call 101 - Surrey Police for General Enquiries and non-urgent matters.

This number will also transfer you to Esher Police Station, which is open from 09.00-17.00 hours Monday to Friday.

Sgt 3528 Nick Reynolds is Sgt for Esher and Claygate

PC 3435 Ian Hallam is the local Esher Officer

Officers can be contacted by dialling 101 or email:

Officers can be contacted by dialling 101 or email: **Please note: the email address has changed for the Elmbridge Policing Team to elmbridge@surrey-police.uk**

Contact for Neighbourhood Watch, is now :

<http://elmbridgehw.ourwatch.org.uk/>

Please report suspicious incidents via 101, or in an emergency 999.

You can also contact Surrey Police online:

<https://www.surrey.police.uk/contact/af/contact-us/>

Or Facebook [https://www.facebook.com/SurreyPolice & X](https://www.facebook.com/SurreyPolice&X) (formerly Twitter).

IN THE KNOW—SURREY & SUSSEX

Please report suspicious incidents via 101, or in an emergency 999.

- ◆ Cars continue to be stolen. If you have a modern car it's time to check whether your vehicle is eligible for a security update. Always remember to keep your car keys and fobs out of sight and if you have a keyless car use a signal blocking pouch. A variety of Trackers are available and can be fitted. When purchasing a new vehicle make sure it is legitimate. Check the V5 and service history, the VIN, (Vehicle Identification Number) and carry out an HPI (Higher Purchase Investigation)
- ◆ Please keep yours safely stored and securely padlocked.
- ◆ Burglaries have also been reported in the area. Ensure that windows and doors are securely locked at all times. Even the smallest open window can be an entry point!
- ◆ Doorstep deliveries continue to be stolen. Please arrange for deliveries to be left with neighbours if you are out.
- ◆ Beware of on-line fraud and phone calls—never give your personal details to anyone.



WELCOME TO ALL NEW WEST END RESIDENTS

We welcome new residents to the village and hope that you find our newsletter informative and entertaining! We have a number of well established clubs and societies in the village of which you can be part at your own discretion.

We hope you settle into our unique village life and enjoy the lovely environment, its wildlife, woodlands and friendly community spirit with all it has to offer.

BECOME A FRIEND OF THE VILLAGE NEWS

As we look forward to our 21st year of publication in 2025, we face a backdrop of ever increasing costs. In order to keep the Village News viable, a number of supporters have made donations to become a 'Friend of the Village News'. This would involve making an annual donation of £50.00 to commence whenever feasible, with the opportunity of having your name published in a list of 'Friends of the Village News' or to remain anonymous if preferred. Alternatively, contributions in units of £10 would also be very welcome.

If you would like to become a Friend or simply make a donation, the bank details are:

A/C name: Village News (West End)

Account no: 56514794 Sort Code: 60-08-04

For further information on becoming a Friend, please contact our Treasurer, Derek Richardson at

derek.richardson@garsons.co.uk

West End Village Hall



Ideal for children's parties, meetings, functions and family occasions.

Adult parties strictly for Village Residents only by special arrangement.

TO BOOK

Visit: wevh.org

Mail: hirehall@wevh.org

WEST END BRIDGE CLUB

We are a small club which meets every Tuesday afternoon in the Village Hall.

We play friendly bridge and new members are very welcome. We are not competitive and members only enjoy a pleasant afternoon with like-minded people.

Anyone interested, requiring more information should contact: Sandra Elms on 01372 466433



DEFIBRILLATOR

OUTSIDE VILLAGE HALL

No training required - anyone can use it

Dial 999 and give the location

You'll be given a key code to open the box

Follow written instructions on the portable unit
Verbal instructions are provided once turned on.

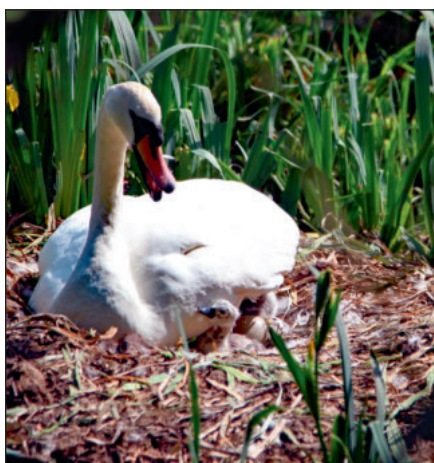
NEWS FROM WEST END PONDS

What an amazing year this has been for our West End wildlife! After a never ending wait of approx. 35 days faithfully sharing parental duties sitting on their nest the swans produced NINE cygnets! The balloons and bunting announced their arrival and with great excitement visitors came to view the new arrivals, A pair of Mallard ducks also hatched FOURTEEN ducklings! This must be a record for West End! They moved into the Swans nest once it became vacant. Since then another 12 ducklings have arrived! The Coots hatched 2 chicks and the Moorhens 3 chicks respectively. The pair of Egyptian Geese sadly lost 3 goslings to a Fox.

Not to mention the dozens of Canada Geese and their goslings who descended on the green as well as another pair of Egyptian Geese and their goslings, once the swans had left!

I am sure you will have seen the video and messages on the West End Face book page by Lyda Archer of the swans and cygnets being rescued by the Swan Sanctuary staff, and gently placing them in the River Mole. Whilst trying to move her family from West End to the River Mole, the Pen caught her wing in a locked gate by the Allotments/Rec. Thankfully no injuries were sustained and the family were happily seen swimming on the river following their release.

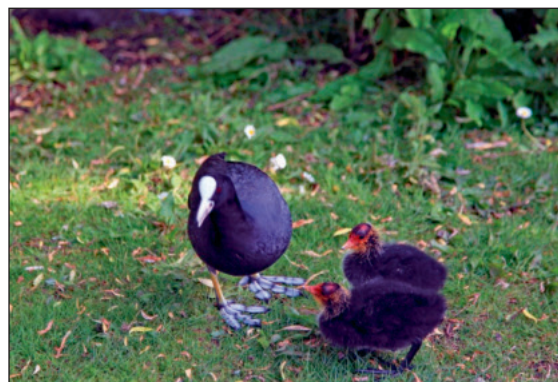
A huge 'thankyou' to the Swan Sanctuary staff who handled them with great professionalism and care.



*Above:
"Hello mummy" - the first arrival!
Angela Stockbridge*

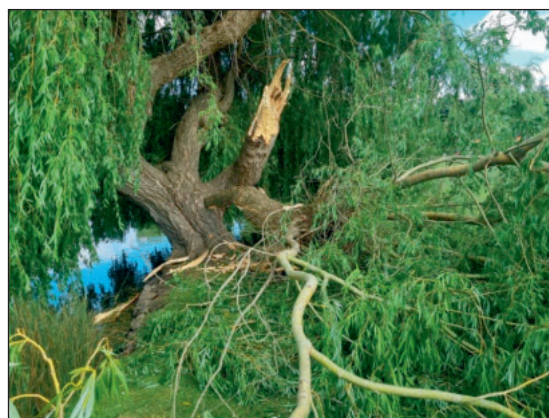
*Left: Poppy Houghton took this
lovely photograph of all nine of the
newly hatched cygnets*

*Below: Harriet McCann captured the
happy family by the pond.*



*Top: Mother duck with her 14 ducklings huddled
together by the edge of the pond.
Above: The Coot with her two little 'red-headed' chicks.*

THE WILLOW TREE



A large bough from one of the Willow trees by West End pond recently broke away from the main trunk crashing on to the green. Hopefully no injuries were sustained as a result.

Many years ago, local children loved to climb the tree for fun!

Photos: Angela Stockbridge



COUNCILLORS' CORNER

News from your local councillors (EBC) (www.esher-residents.com): West End is part of the Esher Ward for Elmbridge Borough Council (EBC) and has elected 3 independent Esher Residents' Association (ERA) councillors: Simon Waugh, Richard Williams and Simon Leifer, ERA Chair. They receive no salary and only minimal allowances.

Moore Place Golf Course:

It is Greenbelt land and residents are very concerned and it seems some alarming misinformation has been circulating on social media platforms. By the time of publication of this article the developer will have advertised and held a public consultation (Esher Theatre 19 June). A full planning application is expected but it is not known when. At this stage residents can lodge their feelings and the councillors on the relevant planning committee will then make a determination after a full evaluation by council officers. The developers have submitted a "scoping application", one of the preliminary steps to determine what information they have to submit in support of any future full planning application. It is a required technical step and council officers, as experts, determine the extent of required information. EBC has now published its Scoping Opinion and this should be read alongside the Officer's report (planning ref 2025/1107). At this stage we councillors have nothing we can contribute to the process and have to await the arrival of a full planning application. Councillors have an obligation not to pre-determine any planning application as it has to be subject to full consideration only at the relevant planning committee. The Government has changed the national policy of development on the Greenbelt and some difficult decisions lie ahead for all councils with Greenbelt especially Elmbridge where it is over 50% of the borough. As Elmbridge has limited land to meet the Government's new and extremely high housebuilding requirements, this is a very challenging time.

Park Close Footpath Closure:

Amazing news as, after our last update to you in March, the Government Planning Inspectorate has agreed that Surrey CC must give priority to, and expedite, the application to reinstate the footpath rights and must determine this by 20 November 2025.

Here is an extract from the Inspectorate's decision (reference Ref: ROW/3358363 gov.uk/planning-inspectorate).

Representation by Douglas Fryer
Surrey County Council
Application to add a footpath along
Park Close to Esher Public Footpath
43110 (Council Reference: CP601)
The representation is made under Schedule
14 of the Wildlife and Countryside Act
1981 seeking a direction to be given to
Surrey County Council to determine an
application for an Order under that Act.



"On the road to Nowhere" -
Talking Heads

The representation made by Douglas Fryer is dated 23 December 2024.
The certificate under Schedule 14 is dated 4 February 2021.
The Surrey County Council was consulted about the representation on
21 January 2025 and their response is dated 28 February 2025.

Decision: On behalf of the Secretary of State for Environment, Food and Rural Affairs and pursuant to paragraph 3(2) of Schedule 14 of the Wildlife and Countryside Act 1981,
I HEREBY DIRECT the Surrey County Council to determine the above-mentioned application not later than six months from the date of this decision.
Claire Tregembo
INSPECTOR (20th May 2025)

"You cannot pass"— Gandalf

Hopefully residents will soon be able to once again walk freely with out restriction along this long established public right of way.



If you want to contact us please email on:
helloesher@esher-residents.com

STOP PRESS

Surrey County Council have now responded and are now seeking comments on the application by the middle of August. If you wish to comment please see the relevant letter and plan on the ERA's website

www.esher-residents.com

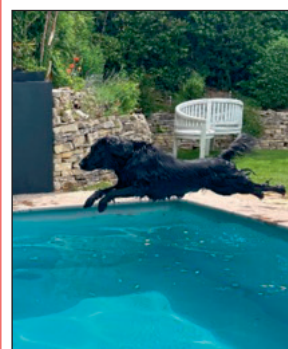
for further details.

Simon Leifer, Simon Waugh & Richard Williams

INDY'S SUMMER DOG BLOG

Quite a lot has happened since I last **repawted**. You may recall that, much to my Mummy's distress, I'd been limping on my front left leg for some time. In pursuit of answers, I was whisked off to see none other than the esteemed television veterinarian, Mr. Fitzpatrick, in Godalming. A most pleasant fellow - although I must recount an indignity. Whilst I was fast asleep, he performed a CAT scan on me! I was outraged. However, I can assure you, I remain unequivocally and proudly **ALL dog**.

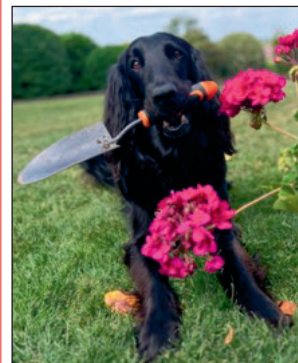
During this visit, I became acquainted with a most troublesome individual by the name of **Arthur Rightus**. If you have not yet met him, I hope you never do. He is a rather unwelcome guest in my elbows and the cause of my recent troubles. You'll be pleased to hear though that my mummy conducted herself with considerably more decorum than on our previous veterinary excursion (you may remember that episode involved her sprawling most inelegantly on the floor. Of course I still maintain my innocence, and declare it was entirely unrelated to me).



Now, thanks to a thoughtfully curated regime of medication - cleverly concealed in delicious meat paste, which I heartily recommend - I am quite comfortable. My walks are somewhat shorter these days, but I can indulge in as much swimming as I please, which is delightful for a water-loving pup such as myself. Thanks to, pawsome Daren from DMB Pools the pool is now in tip-top shape so I can enjoy that prescribed swim. He is good at multi-tasking too as whilst he tests the pool, he gives me a good ear tickle. That is always a

bone-fide way into my good books as well as those wonderful words 'Go Swim!'

Recently, we had a little impromptu soiree at mine where Millie, the Golden Labrador and Hammy the French Bulldog (and associated humans,) came to visit. Such fun. Love a good party. Though I venture out less often now, I remain quite busy at home as I'm always ready to lend a paw. Whether greeting guests, fetching necessities, gardening or providing gentle moral support. One must contribute to the household, after all.



Should you see me about, I am the **flat-coated retriever sporting a pink collar and a distinguished limp**, do feel free to stop and say hello. While vigorous play is no longer on my agenda, a friendly chat and a good fuss are most welcome. And might I encourage you to participate in the **dog show at the Village Show on August 24th**? It promises, as usual, to be a splendid affair.

Indy

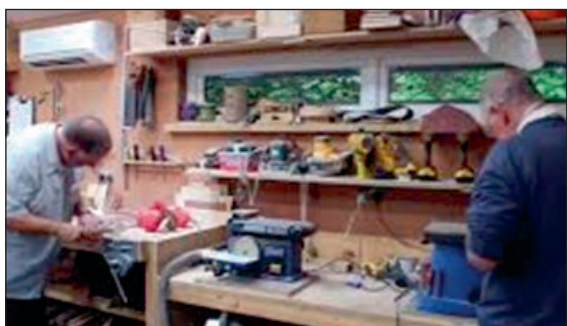
THE PRINCESS ALICE HOSPICE MAN SHED VOLUNTEERS REQUIRED



Do you have craft or DIY skills? Do you enjoy helping others?

The Princess Alice Hospice, Esher, is looking for more volunteers to join its support community.

The purpose-built workshop in the Hospice grounds is part of a support network for family carers, those suffering from life-limiting illnesses and the recently bereaved. It allows 'Shedders' (men and women) to spend time with others in similar situations, learning new skills and enjoying friendship and support along the way.



The Hospice is looking for Shed Session Leader Volunteers. If you enjoy helping and teaching other users, are comfortable supervising the safe use of equipment, and can offer a listening ear to the attendees, contact:

The Volunteering Team on 01372 461856 or

email volunteering@pah.org.uk

Peter Prowse



GARDEN CENTRE • FARM SHOP • BEVAN'S BUTCHERS • RESTAURANT • PICK YOUR OWN

GARSON FARM

EST. 1871

PICK YOUR OWN

@garsonfarm_pyo

ENTRY BY FARM TICKETS ONLY. BOOK ONLINE AT WWW.GARSONS.CO.UK

Garsons
Countryside since 1871

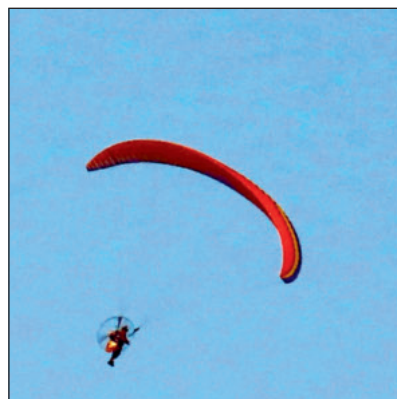
THE PRINCE OF WALES UNDER NEW MANAGEMENT



Karen Paxton has recently joined the Prince of Wales team as the new Manager. Kaz (as she likes to be known) has a long and varied career in hospitality. Kaz is very approachable and personable and has already made changes to the menus and improvements to the interior and exterior of the pub. We wish her every success and hope she will enjoy living in our unique and friendly village.

Karen states: I have been in the hospitality business for over 40 years starting as a chef and then moving from back of house to front of house. I have had the privilege of working with some incredible individuals like Prue Leith and The Roux Brothers in some of the most beautiful venues such as Glyndebourne Opera House, Penshurst Place, Brighton Pavilion and Winston Churchills first home Lullenden Manor. Growing up my mother was in pubs and I always wanted to have a pub that was part of a community, where I could deliver a first class service (I am trying to create this at The Prince of Wales).

PHOTOGRAPHIC CORNER



Don Tyzack sent in this photograph of a paraglider flying over his garden in East Horsley.

Don is a regular contributor to the newsletter and we always welcome his interesting articles and photographs.

WEST END VILLAGE SHOW

"For the Village by the Village"

Date: Saturday 23rd August 2025

Time: 12:00pm onwards

Activities Include:

- Children's fun fair rides
- Variety of stalls including Arts & Crafts and charities
- Traditional favourites: Coconut Shy, Smash-a-Plate, Book and Toy Stall
- Fuller's dray horse trailer rides
- Classic car display by West End Motor Club
- Children's Sports
- Fun Dog Show
- Live entertainment from Matto the Clown, Epsom & Ewell Silver Band, and Kingston Hospital Radio

The Marquee:

- Opens at 1:30pm, featuring Village Show entries and prize winners from all ages - please enter!

Food & Drink:

- Afternoon teas provided by the Church at the Village Hall from 2:00pm
- Selection of food and drink trucks on the green with a refreshments stall beside the Sports & Social Club
- Cake sale in St. George's Church

Additional Highlights:

- Grand Raffle with great prizes
- Silent Auction with exciting bids
- Prize Giving and Auction of produce to conclude the day

Support the Show:

- Committee members will be calling on all households from the end of June – we are very grateful for your support
- Donations are appreciated, either cash or via Bank transfer:

**West End (Esher) Sports and Flower Show,
Sort code: 20-90-56, Account no: 10334456.
Please provide your name as a reference with the word 'Sub'

Looking forward to a memorable day and hoping for good weather!

Julia Iveson



WEST END VILLAGE SHOW BOOK AND TOY STALL

Books in good condition (particularly current fiction and books for younger readers) together with children's pre-loved toys can be dropped off from 11th August by prior arrangement to Simon and Jayne at Waldeck Cottage, 36 West End Lane.

Please contact Jayne:
jayne@the-pcc.com or 07780 955589.
We are sorry that we are unable to accept book and toy donations on Show day.



VE DAY 80th ANNIVERSARY COMMEMORATIONS

The awful weather over the May Bank Holiday prevented many of us organising events on West End village green to celebrate this event. However, bunting and Union flags were flown in many parts of the village to show support for the event.

For those of us who ventured into London suitably dressed for the anticipated inclement weather, were not disappointed with the celebrations along Whitehall and The Mall! Thousands of people descended on London from all parts of the country and other parts of the world to celebrate the occasion.



The atmosphere was cheerful and amiable everyone was delighted to be part of the celebrations despite the cold weather. Thousands of all ages and nationalities filled the Mall awaiting the arrival of Military Parade, the Red Arrows and the Royal Family's appearance on the balcony. (Sadly by the time I arrived at the Queen Victoria (Wedding Cake) memorial amongst the crowds, the Royals had retreated from the balcony into the Palace, but I did get an excellent view of the parade and the flypast! Although it was cold and dark clouds hung over the event it did stay dry until later in the day. It was a special day to remember!

TROOPING THE COLOUR

King Charles III's official birthday was celebrated on 14th June with the annual ceremony on Horse Guards Parade.

No. 9 Company Irish Guards trooped the colours during this year's ceremony.
Angela Stockbridge

Thanks to Derek Richardson for sending in this stunning aerial photograph of West End was taken in 1945. Sadly the photograph of the local girls attending the VE Day celebrations could not be found!



DAVE PAGE Elmbridge Countryside Estates Officer Retires

It all started in November 1991 when Dave was appointed as the new Ranger and part of the Commons Management Team to protect Elmbridge's commons!



The article below, presumably in the 'Esher News' at the time, shows Dave with Councillor, June Libby, who was an ardent supporter of the commons.

Throughout the 33 years many residents got to know Dave who has tirelessly worked for the benefit of Elmbridge Commons including West End and its surrounding woodlands. His enthusiasm and dedication to his work has been second to none.

During his tenure Dave will be remembered for his knowledge of the local area and guiding walks in his spare time for members of the former Residents' Association and many other groups.

One of the most memorable was a walk in October 2002 in search of forgotten history and wildlife starting at Horseshoe Clump Car Park across the A3 towards Blackhills. The Rangers had cleared the open heathland giving a wonderful view of Black Pond. Dave's knowledge of the area, wildlife and history was truly exemplary.

We found the circular foundations of an old Pump House. Elm pipes in the middle of the pond were connected to one-inch bore lead piping through ducting which transported water to Claremont House many years ago. The remains of an ammunition dump which originally had 3ft thick walls was located nearby. The Ice House (right) also served Claremont. On the south side of Black Pond we came across a site where a WWII German Heinkel bomber was shot down. Locals would regularly swim in the pond. 300 years ago this was valley mire where large swamps criss-crossed with ditches and streams. In the 18th century a dam was built and Black Pond was created.

Dave's detailed knowledge and passion for nature and creating habitats helped us to identify various fungi, birds, reptiles, trees, insects and flowers, the critically endangered Starfruit (below) still thrives in Chequers and Half Penny Ponds.



The Commons Management Team expanded into the Countryside Team and the results of their work can be seen everywhere. During Dave's time he and his team have worked in all weather conditions both in the hot summer months, and (in the past) icy cold winters, but worst of all is the wet weather! They have endured both criticism and praise for their work and experienced all types of hazards including bramble, gorse and thorns, stings, mozzies, Ticks and dog poo in the face when strimming, and dealing with nauseating waste! However, despite all this he and his team are very proud of what they have achieved and he thanked his team for all their unwavering support over the years.

Above right: Dave identifying fungi with onlookers - the late Mary Bedford (centre) Joan Wood (right) with other residents.



Left: Dave and Kate Leggett clearing Crassula from Chequers Pond.

A photo from an article which appeared in the Independent in April 2000.



L-R: Dave with some of the current and former residents: Janet Thirtle (2nd left) Dave Page (centre right) Mary Bedford (2nd right) and Joan Wood (far right)

Dave, I know that I speak on behalf of all West End residents who know you, and would like to thank you for all you have done keeping West End and the surrounding woodlands so accessible and pleasing for all to enjoy.

We thank you for all your support and dedication. We all wish you a very happy retirement and hope you enjoy your new found freedom for many years to come!

Angela Stockbridge



**Painting
PLEIN AIR
Esher**

Artists of all skill levels, are welcome to paint or draw outdoors together, in the company of a small group of your friends. Join us in our Peaceful Tranquil Garden in West End, Esher.

The Garden is open from 11 am to 4 pm for private bookings from May to August 2025

- Donation of £10 goes to **The Princess Alice Hospice**
- Bring your own Art Supplies and Lunch if wanted
- No Instructor but peer support of your friends
- Tea, Coffee and Cakes will be provided all day

➡➡➡

For those interested in viewing only the Garden, we will be **Open for One Weekend Only** on
Saturday July 19th & Sunday July 20th
No Booking Required.

For more information email us at:
peajaya@btinternet.com



ST GEORGE'S CHURCH WEST END

At this time of the year, we are often pre-occupied with change – usually the weather! However, we now face an unexpected and new challenge. We are very sad to tell you that

Darren, our Rector for the last 5 years, will be moving on in August to pastures new – to Chingford in the Diocese of Chelmsford. This of course means that there will be an Interregnum (also known as a Vacancy) in the Parish of Esher, whilst the PCC (Parochial Church Council) seeks a new Rector. This stressful process can often take between one and two years – but we will certainly as a Parish all work together “to keep the plates in the air”. We of course wish Darren and his family well as they plan their new journey together. Darren’s last services will be on Sunday 10th August.

This news coincided with the PCC having their AGM – when all three of our Churchwardens (Helen and Jane at Christ Church and Andrea at St George’s) happened to be standing down after lengthy terms of office. We are truly grateful for all that they have done to support the Parish.

Ignoring Andrea’s objection) I (Bridget) thought we should include here a summary of how we acknowledged all that Andrea has done over the last 8 years to help make St George’s and its congregation what it is today. This was in addition to having previously supported her husband Peter in this same role during his 9 years of illness.



We were of course determined to recognise all that she has done, and were thrilled to present her with a carefully chosen necklace and a supporting cheque. Andrea has already decided to use this to buy a much-needed replacement sun-dial for her back garden. She is still very much part of our church and will continue to support us all – including Charles Hawkshaw-Burn – who is stepping into her shoes.



Recent services have included Mothering Sunday – when EVERY member of the congregation receives a posy of daffodils; this year kindly donated by Waitrose, Tesco and Buds and Blooms. Palm Sunday and Easter Sunday followed, with the usual Easter Garden on display both outside and inside the church. Did you spot it?

The church was decorated with bunting on St George’s Day – swiftly followed by the addition of the Union Jacks to recognise the VE Day celebrations. No doubt these will all come out again for the Village Show!

Village Show This is the highlight of our fundraising year. As our church is nearly 150 years old (it was only meant to last 7 years!) there is always something needing to be done to keep it functioning and beautiful. So, this is a great opportunity to raise much needed funds for this work. As usual we will be having our renowned Cake Stall (including homemade Marmalade)– and also a Gift Stall. Please pop in and see the church and buy something while you are there! The Christ Church team, as usual, will also be serving cream teas and cakes in the Village Hall during the afternoon. We all look forward to this wonderful Village event – and are so grateful to be part of such a lovely community.



Pet Service

Sunday 28th September AT ST GEORGE’S at 4pm

It will be our 17th Pet Service this year. There is obviously parking locally and the green opposite – on which to take your doggies for a last minute “comfort break” before the service. Posters and leaflets will be put up nearer the time – but make a note in your diary for the event – cats, dogs, rabbits, guinea pigs... a horse perhaps? ...whatever your pet – it is welcome! Do tell your friends!

For more information about all our services (at both churches) please do visit our website: <http://www.esherparish.org.uk> Here you can find everything you might want to know about the Parish of Esher including Music on The Green.

Finally – thank you, as always, for your continued support and we wish you all a very sunny and happy summer.

Andrea Lindow and Bridget Williams

SURREY SCULPTURE SOCIETY'S EXHIBITION AT CLAREMONT LANDSCAPE GARDEN



Enjoying a welcome drink and introduction by the new General Manager of Claremont Landscape Gardens, Grenville Chaganis, (above: 2nd right) and artist Caroline Wheaton, (right), together with members of the National Trust and guests on the Preview Evening. The walk around the lake revealed an amazing collection of sculptures in an array of different styles, colours and medium. These included stainless steel/cutlery, marble, iron/bronze resin, Oak with masonry paint, patinated Jasmonite, ceramic stoneware and Portland limestone. The very talented artists showcased seventy five sculptures including torsos, birds, animals, fish, and abstract, amongst others, all created with perfection and in stunning detail! It was hard to choose a favourite they were all so wonderfully interesting and beautifully presented. Visitors could also enjoy boating on the lake.



Angela Stockbridge

ESHER FRENCH CIRCLE

www.cerclefrancais-esher.uk

Esher French Circle concluded its 2024-25 season with two talks from regular lecturers on aspects of French life, culture and history. After its summer break, Esher French Circle will start its 2025-26 programme on Wednesday, 15 October.

Disappearing jobs in France

Danielle John's talk to Esher French Circle on 21 May explored the world of disappearing jobs in France. Danielle recalled how in her childhood village, local washerwomen, mattress-stuffers, umbrella-repairers, and even itinerant knife-sharpeners and pot-menders were all part of everyday life. Today, many such skills would be at risk of disappearing completely, if it were not for pockets of dedicated enthusiasts who work hard to keep some of these traditional jobs alive.



*Telephone
Switchboard
Operator*



Washerwomen



*Itinerant Knife
Sharpener*



*Local
Umbrella
Repairer*

18 June 2025: Ernest Hébert, French painter, by Thierry Viennois

Born in Grenoble during the Romantic period, Ernest Hébert (1817-1908) started painting just as the new school of Realism was taking hold. After classical training at the École des Beaux-Arts in Paris, Hébert rose to fame with "La Mal'aria" at the Salon of 1850. He divided his time between France and Italy. Sought after for his portraits of Parisian high society, Hébert was an engaging, cultured and music-loving man and his sociable temperament earned him lasting friendships with many personalities, including Princess Mathilde. Right: Ernest Hébert, French 19th century painter



Esher French Circle: all welcome

Esher French Circle offers monthly talks – in French – by native or fluent French speakers, for anybody interested in keeping up or improving their French, in a relaxed and convivial setting. The talks take place in West End Village Hall, Esher.

The meetings are on the third Wednesday of most months and the doors open at 7pm. There is ample opportunity to mingle and chat over a cup of tea or coffee and biscuits before the main talk starts at 7.30pm. Esher French Circle warmly welcomes anybody with an interest in France and French life.

More information is available on the club's website:

www.cerclefrancais-esher.uk

or from Peter Prowse on M 07973 213039

Email: peter.c.prowse@gmail.com

Peter Prowse

WATCH OUT FOR THE OAK PROCESSIONARY MOTH CATERPILLAR



As we head into the warmer months, we're asking residents to be aware of the oak processionary moth (OPM) - a caterpillar that can be harmful to both people and animals

May to July, these caterpillars are at their most active and can often be seen in groups moving up or down oak trees or even on the ground nearby.

The danger comes from their tiny hairs, which contain a substance that can cause itchy skin rashes, eye and throat irritation, and in some cases, breathing problems.

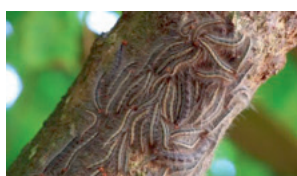
Pets, especially dogs, are also at risk, so please keep them away from the caterpillars and any nest-like webbing you see on oak trees.

The nests are usually white and web-like, often found on the trunks or branches of oak trees. Don't touch the caterpillars or the nests, and keep children and pets at a safe distance.

We're working hard to manage the issue, especially in public areas like parks, woodlands and along footpaths. If you spot anything unusual on an oak tree in a public place, please report it to us.

For advice on how to identify OPM and what to do if you come across them, visit: surreycc.gov.uk - **Oak Processionary Moth**
Thanks for helping keep our community - and our four-legged friends - safe this summer

Article taken from the Surrey CC Highways Service website



Courtesy of Joan Leifer

THE WEST END SPORTS & SOCIAL CLUB



PLEASE VISIT OUR
WEBSITE FOR THE
CALENDAR OF EVENTS
www.WESSC.org

WEST END SPORTS & SOCIAL CLUB

SPECIAL



WEST END GOLF SOCIETY



Anyone wishing to join the
WEGS can call
Dave Morgan on
07956 221566

NEWS FROM THE BAR



Shown here regulars Peter Orton and Robin Newman enjoying a quiet pint while taking advantage of the club's super fast internet connection!! No doubt both reviewing their investment portfolios....

Richard Jenkins, Bar Manager

TWINS LILY AND THEA LOVERIDGE'S 18TH BIRTHDAY CELEBRATION AT THE CLUB



Twins Lily and Thea featured on the front page of our Autumn 2007 newsletter following their birth on the 16th May that year. It's hard to believe they have now reached the grand age of 18!

Tempus fugits!



Lily and Thea celebrated their 18th birthday recently holding a disco in the club for family and close friends. They both regularly assist with behind the bar. They always have a cheerful demeanour and make everyone welcome!

Lily is currently at Brooklands College studying hairdressing and Thea is at Richmond College studying Sports Science.



WEST END ESHER CRICKET CLUB

celebrates 150 years of Cricket in West End

Read about it in Chris Hambleton's report
in the attached Special Supplement.



Photos: Dan Snell, Ruth Loveridge and Rosie Master



WEST END MOTOR CLUB

Closed Doors – we think it's a shame that the Prince of Wales no longer offers a weekday breakfast menu, so this week we went for a scenic run and though initially seriously challenged by heavy local traffic we found ourselves near Horsham where a motoring themed cafe offered quality coffee and bacon rolls!



Our weekly Tuesday breakfast meets at Brooklands Museum continue to gather support. A trio of our local Morgans spanning 60 years featured in a recent quality Morgan publication. Our member Geoff Cox has now added a 'yellow peril' Caterham 7 to our ranks, far removed from its 1950s 750 Motor Club Austin 7 ancestors via the Lotus 7.



For July we have organised a Classic Car road run and lunch in memory of our late friend David Rolfe. In true spirits, we're sure he'd be with us driving his Bentley, enjoying a good lunch, and possibly supping a pint of real ale! A further report in the next VN.

Despite being wiped out last year by the rain, we'll be back in force at the Village Summer Show in August. As our cars, and owners, get ever older we are reminded that we are merely custodians of our cherished vehicles. Come along and see us and reminisce with your memories of the early motoring years before all of today's taxes and restrictions.

Text: Ken, Roger - Photo: Geoff Inman



EMBER MANOR LODGE 4740

Celebrate their Centenary

Ember Manor Lodge was consecrated in September 1925, so it is our Centenary Year and for the last 20 of those years we have met in the Village Hall in West End. I have been privileged to be elected as Master for this special year – nothing to do with ability but more to do with having been a member for over 60 of those 100 years and outlasting all my contemporaries!

We shall celebrate our birthday at our October meeting when we expect a visit from the Provincial Grand Master for Surrey and a special Festive Board, the meal after the meeting. However, I doubt it will run to the gourmet menus of 100 years ago and there will certainly be no cigars – may be a brandy or port, if we can get a lift home.

During the year we shall have several social events, sort of mini celebrations, as well as supporting Charities as we do each year. Our membership isn't large and we have at least 5 members out of the 21 in total who have been Freemasons for over 50 years – but we also have 3 members in their 30's to balance those in their 90's.

We recently presented a cheque for £1500 to the Princes Alice Hospice and a small party of members were shown round the facility – what splendid work they do and while we have made a small contribution we admired the number of helpers, 1300 I am told, that give their time to run the various facilities and shops – on the day of our visit the volunteer gardeners had been busy in the morning, the garden looked beautiful and a fitting and restful surrounding for those who were patients as well as for their visitors.



Photo: Left to right: Marcus Caine, Willow Tilling (PAH), John Billett & Derek Richardson

This year we at Ember Manor will be supporting the charities Myeloma UK, Home-Start Elmbridge and The Surrey 2030 Festival sponsored by the Grand Charity, a corporate effort that hope to raise several millions for various charities over the next 5 years from the 225 Surrey Lodges.

*Derek Richardson
Worshipful Master Ember Manor Lodge 4740*

B & B IN THE VILLAGE



Bed and Breakfast available. All rooms are double bedrooms, made up of king size, and super king beds. The super king can be divided into 2 single beds. All rooms have en-suites and also tea and coffee making facilities, mini fridge and water/juices provided. Virgin cable TV and WIFI
A maximum of 2 adults and 3 children per room,

A warm welcome awaits you.
For further information call


Edwina Halanen (West End Lane)
on 07721 091184

'FRIENDS' OF THE VILLAGE NEWS

We would like to thank the following 'Friends' for their generous donations:

2024
Kathy & Richard Goode
Rob Lowe
A J and B Maddows
Malcolm & Kay Parsons
F J Reader
Derek Richardson
J & J Stadius
Peter and Pat Thompson
Simon & Veronica Whittall

2025
Peter & Naomi Bedford
Ken Berry
Rob Lowe
A J and B Maddows
Malcolm & Kay Parsons
F J Reader
Derek Richardson
J & J Stadius
Angela Stockbridge
Peter Thompson
and donors who wish to remain anonymous.



Wheatley & Sons Limited
ESTABLISHED 1850

Telephone - 01753 P.O. KINGTON.

BRIDGE ROAD, EAST MOLESEY, and HIGH STREET, ESHER.

WHEATLEY & SONS,
(Successors to J. Wheatley & Sons, Ltd.)

Builders, Contractors, & House Decorators.

PLAS, HOT WATER and SANITARY ENGINEERS, PLUMBERS, GLAZIERS, and BELL HANGERS.

Jobbing Work of every description with Bricklayers, Plasterers, Carpenters, Cabinet Makers, Painters, Paperhangers, Glaziers, Gilders, Plumbers, Gas and Bellfitters, Tinsmen, Smiths, &c.

Carpets taken up, Beaten and Relaid. Stoves and Ranges Supplied and Set. Boilers Cleaned. Kitchen Utensils Retinned.


HOUSE DRAINAGE & VENTILATION A SPECIALITY. DRAIN TESTS AND REPORTS.

PLANS prepared and advice given upon all matters connected with New Buildings, Additions, Alterations and Repairs.



FUNERALS FURNISHED in best style and conducted to any part of the country. Cremations arranged. Monuments, Brasses, Memorial Windows &c.

HOUSE & ESTATE AGENTS. FIRE & LIFE ASSURANCE. RENTS COLLECTED. VALUATIONS FOR ALL PURPOSES.


NO JOB TOO SMALL
Telephone 020 8979 5762
Fax: 020 8941 7388
Email:
wheatley_sons@btconnect.com



HOME COOKING
by Elizabeth
EST. 1986

**Bespoke Catering Of
Formal & Informal Events**



WEDDINGS
MEMORIALS
CELEBRATION PARTIES
CHRISTENINGS
CORPORATE EVENTS
HOUSE WARMING PARTIES
THEMED PARTIES
SMALL PRIVATE FUNCTIONS
DISHS AND PLATTERS

ELIZABETH TRELIVING

HOME COOKING BY ELIZABETH
The Showroom 1 Church Road Great Bookham KT23 3PD

T: 01372 453206 M: 07712 760175 E: ejtreliving@aol.com
Or visit our website www.homecookingdirect.co.uk

THE VILLAGE NEWS TEAM

Sheila Apicella
Alice Austin
Aidan Baker
Peter & Naomi Bedford
Lynn Bezant
David Bramley
Tricia Currie
Don Elms
David Ford
Doug & Sue Fryer
Di Gibson
Andrea Lindow
Rob Lowe
Roger Marsden
Rosie Master
Margaret Mazzina
Donald Mungall
Avril Poat
Nik & Judy Wilkinson
Bridget Williams

Treasurer: Derek Richardson
Auditor: Peter Heath
Editor: Angela Stockbridge

SURREY FIRE & RESCUE SERVICE



Should you have any concerns or need further advice
Visit:
www.surreycc.gov.uk/safeandwell
Call free on 0800 085 0767
Text to 07971 691898 with your name, contact number, post code, your primary concern, such as smoke alarms, a disability or safety concern.
**RING 999
IN CASE OF EMERGENCY**



VILLAGE NEWS WEST END

Please make a diary note of copy dates:
Autumn: Friday 5th September by 1pm
Winter: Friday 28th November by 1pm

Please contact Angela Stockbridge Email:
angelastockbridge1115@gmail.com 07817 498531 or 01372 460703

The Village News is supported by local organisations including: the West End Village Club, West End Motor Club, The West End Village Show Committee, Garsons, Winterdown WI, the late Richard Gale, West End Village Hall Committee, The former West End Residents' Association, Advertisers and personal donations. The newsletter is printed by Impress Print Services of Hersham and Garsons. Please note the newsletter can also be found on the Garsons website on www.garsons/CommunityPage, www.AFCWestendwebsite and West End Esher Facebook Page.

We thank you all for your continued support.





VILLAGE NEWS

WEST END

Volume 22 Issue 2
SUMMER 2025
21ST EDITION

WEST END ESHER CRICKET CLUB—150TH ANNIVERSARY SPECIAL EDITION

Dear Westenders,

Well that was quite a party. A huge thankyou for your support of our 150th Celebration on the 21st, a brilliant evening and so good to see so many of you there from across the generations.



You can't have cricket without cake – The Acoustic Angels got the village dancing.

I should rewind a little though and let you all know about what's been going on in the cricket club to mark our sesquicentenary (ok I admit it, I had to look up the word for a 150th) and tell you all about our trip to play against a club established long before ours.

After the battle of Trafalgar, Admiral Sir William Hoste put into the island harbour of Vis in what is modern day Croatia. Having a bunch of boisterous sailors in need of some action meant that he and his crew disembarked and of course they set up a game of cricket. Where better then to test our mettle? The club today has a ground in part of what used to serve as an airstrip in the latter part of WWII and the outfield is a little 'agricultural'.



Unusually, the scorer's position is inside the boundary, under a tree and the outfield is, well, stony!

Nevertheless West End CC went in to bat and club president Eric Strange partnered our youngest tourist, ones wicket-keeper Jack Hambleton for the first over. Eric played in the centenary game for our club, so to turn out again 50n years later is quite something. Between them they had 101 years of West end history – Jack is 19 and Eric is 82!



Despite the efforts of a Croatian international player, West End smacked the ball hither and yon and amassed a total that proved to be beyond our hosts. Rumour had it that they were facing another game in the afternoon and in keeping with our well known club ethos of everyone being welcome, when it became clear that a couple of players from the home side needed to go and open their restaurant, we agreed to lend them both some players and our support. A fabulous afternoon of cricket was had, with Lord Hoste losing by one run on the last ball of the game.

/Continued over



You can contact me directly chairman@weecc.co.uk or simply come and have a chat on match days or training nights.

In short, your cricket club continues to perform in the best traditions laid down 150 years ago. We are proud to be one of the most inclusive, friendly and sociable cricket clubs in the country and we are proud to still be West End Esher CC.

Thank you for your support and I hope to see you on the boundary soon.

*Chris Hambleton
Chairman West End Esher CC*

The stands in Vis are basic, but we did our best. Next day saw another match and another West End victory which boded well for the season to come.

The following weekend we welcomed our new intake of Junior cricketers, with Ruth Lovering now in charge of our colts section. Ruth has been amazing in organising everything, including our new Friday night food offer from Kell's Kitchen – if you've not tried it, you should! This year our younger age groups have been following a course designed by our own Gareth Hunter and his team from Playball, with the older kids coached by our experienced ECB qualified team led by Will Lucas. We have seen a big increase in numbers on Fridays thanks to this and my thanks go to Ruth and her support team. You will also have seen and increase in junior matches and training nights with our girls having their own session on a Wednesday. Individual coaching sessions are also available so if this is of interest please contact Ruth directly at

juniorchairman@weecc.co.uk



Our U8 team enjoying their victory

On to senior cricket – we have five senior teams now. Our First XI beat league leaders Merrow on Saturday convincingly to leave us third in the table, which for a team that was only promoted last season is pretty good going! The game also featured an incredible performance by Patrick O'Neill who scored 72 not out, then took 8 wickets for 20 runs in 9 overs. To put that into context, Paddy currently has the best bowling figures of anyone in any of the divisions of the entire Surrey Leagues. Our seconds also won on Saturday leaving them in mid table in a very tough league – again they went up last year and Captain Joe Bridges has a great team around him.

Our T20 side continued their good form by beating West Wimbledon – We will be hosting the Twenty20 Finals day on August 10th so hopefully we make it through to that and then we will once again be running our cricket sixes day on the August Bank Holiday Sunday. Our over 40's side under Paul Campbell continue to roll back the years and beat all-comers and our Sunday side under Miles Horwood's captaincy won a brilliant game on Sunday which came down to the last over. We have had a number of new players join us this year and you are very welcome to do so, whatever your level of experience.