



## WEST END VILLAGE SHOW 2024

"For the Village by the Village"



This year marks the 70th anniversary of our annual Village Show, to be held on August Bank Holiday, Saturday 24th August, from midday, on our Village Green. We are honoured that Derek Richardson, Director of Garsons Farm, kindly agreed to share his recollections of the Show over the years. Derek joined the committee in 1967 and served as Chairman from 1970 for six years.

As a 16-year-old boy, Derek remembers the first Show in 1954, which was inspired by the success of the Queen's

Coronation party the previous year when, as a tall young man, he made his first visit to the Prince of Wales! Until 1987 two shows were held: one in July on the green with the competition marquee and side shows; the other in September for the Autumn produce, including flowers and jams, followed by prize giving in the village hall. The format of the Show has largely remained the same. Traditional sideshows were run by the committee (including Dunk The Damsel which remains today), which were participated in by both children and adults. One memorable moment is a photograph of a relative of Derek's, now aged 71, making a splash in a bikini! Initially, there was no Dog Show, but the Fancy Dress competition for youngsters was a highlight, starting with a parade led by a piper from Garsons Farm around the green to the marquee. Major additions over the years include the Arts & Crafts market and fairground attractions. At the end of the day, the auctions of produce were as popular as ever with Derek as auctioneer and Ian, his son, following in his footsteps until recently.

*Derek and Pam celebrating their 60th wedding anniversary in 2022.*



The Show's organisation was committee-led and divided into more subcommittees than today, each with specific responsibilities. Committee members would often meet informally at the Prince of Wales pub before Sunday lunch, fostering a strong sense of community. Formal committee meetings were held separately. For many years the committee would organise a dance in the marquee on the night of the Show. Villagers have always supported the Show generously, a tradition for which we are deeply grateful.

The Show has always been a non-profit organisation. With the profits from the Show, we are delighted to be able to donate annually to local charities and good causes within the West End community.

Garsons Farm has been integral to the Show since the beginning. In earlier times, Garsons would field a "Tug of War" team to compete against villagers, an event that was highly entertaining especially in 1976 when it was held across the pond, resulting in very muddy losers. Without Garsons' support, the Show wouldn't be possible. Although family members have traditionally served on the committee, Alastair Joel, who works at Garsons, has now taken over as Chairman, ensuring continuity. Thank you, Garsons!



*Derek, the Auctioneer at the Flower Show in 2016*

We look forward to welcoming our community, neighbours, and friends to our Platinum Show this year. All our traditional attractions will be there, the classic cars are back and there'll be Fuller's Dray horse trailer rides around the green. We have added some special classes in the marquee to celebrate, along with a cake based on a classic 1954 recipe. Our committee will be visiting you shortly to

drop off a programme, so please enter as many events as you can. The Show is open to the whole family, with prizes to be won.

Finally, if anyone has any early memories or photographs of the Show, please do send them to us via [westendvshowsec@gmail.com](mailto:westendvshowsec@gmail.com), as we are putting together an exhibit in the marquee to celebrate our 70 years.

*Julia Iveson - Publicity, West End Village Show  
Front cover of programme drawn by Lisa Stewart*

### WEST END VILLAGE SHOW BOOK AND TOY STALL

Books in good condition (particularly current fiction and books for younger readers) together with children's pre-loved toys can be dropped off from 12th August by prior arrangement to Simon and Jayne at Waldeck Cottage, 36 West End Lane. Please contact Jayne: [jayne@the-pcc.com](mailto:jayne@the-pcc.com) or 07780 955589.

We are sorry that we are unable to accept donations on Show day.



## CALLING ALL WEST END GARDENERS

West End Allotment creates a new cut flower garden to support Princess Alice Hospice – Can you help?

At the start of the 2024, West End Allotment Association created a communal cut flower garden with the view to contribute towards the flower displays the Princess Alice Hospice (PAH) team put together on a daily basis. This is a long-term plan with 2024 seeing the plot holders clearing the growing area and planting Dahlias, Lillies, Sweet Peas, Sunflowers and Gypsophila.



We are hoping the West End community can help us enhance the cut flower garden further by donating perennial plants such as, Peonies, Echinea, Rudbeckia, Aster, long stem Roses, Shasta Daisies and Hydrangeas. Maybe you have some plants in your garden that have become too big and can be split or you are updating your borders and you have plants you no longer need.

If you would like to donate to the cut flower garden please contact:

Helen on 07970 639385 or [helen@phsmedia.co.uk](mailto:helen@phsmedia.co.uk)

*Article & Photo: Helen Spinney*

Your invitation to the  
**Charity Gala Night**  
to enjoy an evening of Opera Classics  
and Show Music performed by  
four professional opera soloists  
accompanied on keyboard  
All seated in the marquee on  
West End Village Green  
at 7pm on  
**Bank Holiday Monday**  
**26th August 2024**  
in aid of **Save the Children**

Tickets £25  
Book by email  
[stcesher@gmail.com](mailto:stcesher@gmail.com)  
Seats reserved for groups  
of eight or more  
Bring a group and  
picnic on the green  
beforehand  
Doors open 6.30pm  
Evening finishes around 9pm  
West End Lane, Esher KT10 8LE



**Save the  
Children**

## LOCAL WRITER'S SUCCESS!



My new novel was published in April after 18 months of writing. To my surprise it was selected by The Times as Book of the Month and has now been chosen as one of the Top 10 Thrillers of 2024.

The book is called *Honour Among Spies* and although it's mostly set in London, one of the characters lives in a cottage in a Surrey village. The location bears a strong resemblance to West End!

*Merle Nygate*

## IMPORTANT PLEASE READ.....

Call 999 for Emergencies only.

Call 0800 555111 for Crimestoppers.

**Call 101 - Surrey Police for General Enquiries and non-urgent matters.**

This number will also transfer you to Esher Police Station, which is open from 09.00-17.00 hours Monday to Friday.

Sgt 3528 Nick Reynolds is Sgt for Esher and Claygate

PC 3435 Ian Hallam is the local Esher Officer

Officers can be contacted by dialling 101 or email:

Officers can be contacted by dialling 101 or email: **Please note: the email address has changed for the Elmbridge Policing Team to [elmbridge@surrey-police.uk](mailto:elmbridge@surrey-police.uk)**

Contact for Neighbourhood Watch, is now :

<http://elmbridgehw.ourwatch.org.uk/>

Please report suspicious incidents via 101, or in an emergency 999.

You can also contact Surrey Police online:

<https://www.surrey.police.uk/contact/af/contact-us/>

Or Facebook [https://www.facebook.com/Surrey Police & X](https://www.facebook.com/SurreyPolice&X) (formerly Twitter)

## IN THE KNOW—Surrey & Sussex

Please report suspicious incidents via 101, or in an emergency 999.

**Beware of thieves stealing delivery packages off doorsteps in broad daylight. If you are not at home make arrangements for packages to be delivered to neighbours.**

- ◆ Keep all windows securely locked at all times and once again please remove all valuable items from cars when parked.  
**Car thefts continue in the area.**
- ◆ Report suspicious emails to SERS (Suspicious Email Reporting Service). Mobile phone providers also offer a service which allows customers to report suspicious text messages by forwarding them to 7726.
- ◆ There have been a number of bicycle thefts reported in the area—please keep yours safely stored and securely padlocked.



## DONATIONS BY VILLAGE SHOW



Alastair Joel, Chairman of the Village Show, presented both George Pullin and Andy Robinson of Rentstart, and Angela Stockbridge of the Village News, with cheques for £1000 and £600 respectively.

Rentstart is a local charity working with people in our community who are facing or experiencing homelessness. Every year we help to find somewhere to call home for around 140 people, and provide tailored support for all of our clients. The causes of homelessness are manifold – relationship break-downs, financial pressures, addiction, bad luck, mental health problems - and we support clients with these and many other challenges. Homelessness is a growing issue nationally and locally, and we want to continue to provide help and support to those in our community who need it the most. Everyone has the right to a home, a life of purpose and a sense of hope. This is why we exist. Thank you to the Flower Show committee for this wonderful donation.

*George Pullin - Operations Coordinator*

*Andy Robertson - Community Engagement Manager*



## CHRIS GREAVES/WISE OWL 60 Years of Volunteering in Girlguiding and Esher Girlguiding



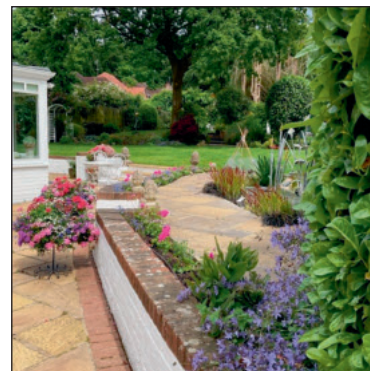
Chris Greaves/Wise Owl, formally known as Jay, an 1st Esher Brownie/Ranger leader, celebrated 60 years of voluntary service with the Esher Units and Esher District in March 2024. Chris has been involved in all sections, including Rainbows and Guides, but mostly with 1st Esher Brownies.

A lifetime of dedication to Guiding in Esher, a phenomenal achievement.

Many Congratulations Chris!

1st Esher Brownies/Rangers  
Article and Photo: Swan/Jill Judd

## THE WHITE HOUSE, 21 WEST END LANE, ESHER, KT10 8LB



Dear Garden Lovers,  
We are writing to tell you about our lovely garden which will be open for pre-arranged visits for groups of 8 up to 15 visitors for the whole of July. This will be the third year that we have been open to visitors under the National Garden Scheme.

In addition, we will be open to all visitors for one week-end only, on 3<sup>rd</sup> and 4<sup>th</sup> August.

For a pre-planned group visit the cost will be £10.00 per head, including tea and cake or, if it is an evening visit, £20.00 for prosecco and canapés. Half of the fees will go to the National Garden Scheme, who support a number of worthy charities, and half will go directly to our own much-loved Princess Alice Hospice.

Our garden is on various levels and centred on a mature oak tree. In addition to interesting planting and an unusual layout, we have an impressive water feature and several sculptures.

The planting has largely been the responsibility of our own very knowledgeable lady gardener who will join us for evening visits as she is always delighted to share her knowledge with our visitors.

We would be delighted to hear from you, either by telephone on 01372 466233 or email at [peajaya@btinternet.com](mailto:peajaya@btinternet.com)

For more information, including wheelchair access, please see The White House, West End, Esher on [www.ngs.org.uk](http://www.ngs.org.uk) or [ngs.org.uk/gardens/the-white-house-kt10](http://ngs.org.uk/gardens/the-white-house-kt10)

Anne Hunt

## CELEBRATING 20 YEARS OF VILLAGE NEWS



The first edition of Village News West End (above) was published in Spring 2004 following the disbandment of the Residents' Association. We celebrate 20 years of publication this year. This would not have been possible without the support of our volunteers, donors and the unique community of West End.

A huge thank you to the Flower Show Committee for its continued support over the years, and indeed for many individual donations made by the local residents who have so willingly contributed to the continued success of the newsletter.

Look out for our stall at the Village Show—with a display of the first copies showing how it evolved from a 4 to 12 page newsletter including a dedicated Sports & Social Club section. We will also be selling the book 'Our Village—A Portrait of West End' by the late George Thirtle.

Angela Stockbridge

## FC Pilates

✨ Hello, Pilates Enthusiasts! ✨  
Unleash the power of your core and join our invigorating mixed ability Pilates class! 🧘 Whether you're a seasoned pro or a Pilates newbie, I will guide you through a dynamic and fun workout designed to strengthen, tone, and rejuvenate!

🧘 Equipment is Provided! I believe in keeping things exciting! Enjoy the benefits of variation in your workouts with the use of various small equipment, all provided. From resistance bands to magic circles, from spiky balls to foam rollers!

Private one to one Reformer Pilates also available, please email for details.

📅 Mat Pilates Class Schedule:

Wednesday at Home studio on West End Lane  
• 🕒 10 am

💰 Pricing: Just £10 per class! 💵

👉 How to Join:

Visit our website: [www.fcpilates.co.uk](http://www.fcpilates.co.uk)

Email us at [admin@fcpilates.co.uk](mailto:admin@fcpilates.co.uk) for a direct link!

Stay Connected:

• Facebook: [www.facebook.com/fcpilatesonline](https://www.facebook.com/fcpilatesonline)





## WEST END PLAYGROUP

Hello to you all from West End Playgroup

As ever here at the playgroup we have been enjoying a fun packed term both in and out doors! We have been covering our topics diligently and I can assure you that our fabulous children could easily tell you all the continents with ease. They are aware of which continent our great country is in, the fact they are from Britain and the South. I could go on with this until I get to their front door, I have been so impressed at circle time with how much information they have retained. As I have probably said before, never underestimate the under five's. The staff here at Playgroup certainly do not and our topic planning highlights this, offering a fun learning environment. With that in mind, we had immense fun erupting our very own home made volcano! Everyone helped make the majestic beast and thoroughly enjoyed setting off its fabulous eruption, grown ups included.



We have now moved ourselves on to the great British wildlife, it's been hard letting the children know the Gruffalo is actually a fictional character but there haven't been any tears thus far. As ever you will see us across the field, off on our Forest School jaunts looking for any of the aforementioned wildlife, learning how to respect them and their environment, hopefully in better weather than the great British summer has offered up so far.

There is so much more I could say but

I shall sign off and hope for a chat over the fence as you are passing by. Grown ups and children at our Playgroup do love a good chat.

We would also love to see anyone looking for somewhere to play on a Thursday afternoon at our mother and toddler group. 1pm to 3pm with cake!

Happy Summer to all and lots of love from children and adults at West End Playgroup.

Article: Jo Weston-Jones

Photos: Jo Weston-Jones & Helen Yates



## ESHER GREEN CHURCH

Hi there fellow West Enders,



Ryan here from Winterdown Road and Pastor of Esher Green Baptist Church. Here is an update on some things that you may be interested in over the coming months. So here we go:

**Bereavement Café (in partnership with Princess Alice Hospice – 4th Tuesday of the month, 11am to 12.30pm)** – Losing someone you love can turn your world upside down, talking about it can really help. Everyone's experience of grief is personal and Bereavement Café is a place to connect and share with other people who have experienced their own loss. It is a place to talk about the pain of loss and find mutual support and encouragement. The Café is not a form of counselling, but about connecting with other people who will listen, appreciate and respect your story.

**Debt Help - Christians Against Poverty (CAP)** – CAP is a national debt counselling charity with a network of debt centres based in local churches. CAP offers hope and a solution to people in debt through its top quality, in-depth **free** service. We have partnered with CAP over the last 6 years to offer free debt counselling in Elmbridge. If you are feeling weighed down by debt, then we can help. Call 0800 328 0006 to find out more and to book an appointment.

**Kids' Film Club (2<sup>nd</sup> Saturday of each month 2.30pm)** – Enjoy a family fun afternoon at our kids film club every month at 2.30pm. The best kid's films shown on our cinema size screen (4m screen with full surround sound experience), popcorn, snacks and drinks all provided free! The films shown are suitable for children ages 4 to 11, although we also provide a safe place for babies to play while their older siblings watch the movie. We have baby-changing facilities available. To find out what films are showing pick up a leaflet from the church or email [films@esherchurch.org](mailto:films@esherchurch.org)

**Youth Film Club for 11 to 16 years olds (1<sup>st</sup> or 2<sup>nd</sup> Friday of the month 6pm)** – Enjoy some fantastic films on our cinema size screen (4m screen and full surround sound experience), popcorn, snacks and drinks all provided free! To find out what films are showing pick up a leaflet from the church or email [youth@esherchurch.org](mailto:youth@esherchurch.org)

**Pet Celebration & Blessing Service (11 August @10am)** – An opportunity to bring your beloved pets, whether they have fur, feathers, or scales, as we come together to celebrate the joy and companionship they bring to our lives. Please bring dogs on leads and other animals in suitable containers, ensuring their safety and the comfort of all our attendees. Tea & coffee will be available for all human guests after the service and treats for the furry ones! See you there, we will have a howling good time!

Our weekly Sunday morning service starts at 10.00am with great activities for children and youth, we would love to welcome you! Please also visit our YouTube channel for our online service every Sunday at 4pm. For more information on these and other activities please check out our website - [www.esherchurch.org](http://www.esherchurch.org)

Every blessing to you all and I look forward to seeing you around our lovely village this summer. And if you are around at the West End Show please come and visit us at our stall!

Ryan (Pastor – Esher Green Baptist Church)

**Esher Green Baptist Church, 6 Park Road, Esher, KT10 8NP**



## INDY'S SUMMER DOG BLOG

Summer is my favourite time of the year but I'm just not certain it's ever going to arrive. I'm sure you must agree that one of the best things in life is rolling on the lawn and kicking your legs in the air to give your back a good scratch but it's not quite the same when the sun doesn't warm your tummy fur is it? I've heard people say the country is going to the dogs but I'm not sure we dogs want it if we don't have some good weather soon.

The big mystery in our household has been getting to the bottom of why I've been limping. Mummy took me to the vet several times and we were baffled. They looked at my legs, shoulders, knees and paws and I even had an x-ray, but they just couldn't fathom out what the problem was. To be honest I knew they were barking up the wrong tree, but I just couldn't tell them. I kept licking my arms but that didn't seem to help, and I have to admit, that although I'm usually the most cheerful optimist, I was feeling extremely sorry for myself, and mummy was getting very upset that I was hurting. One day, she said she was desperate and did a very odd thing. She made me stand with my front paws in a bowl of Epsom Salts dissolved in warm water. For some reason, that made everyone smile, I think because I was smiling as it was so soothing. Then she very gently dried them and with my best, big, brown, shiny eyes I looked directly into her eyes thanking her. I didn't mean to make her cry, but I think she got the message. Gradually after a few days of paw soaking I was much better, the pads didn't hurt anymore, and I could walk, run and bounce like the puppy that I am! (Although I am going to be 8 at the end of August.) Now she bathes them once a week and rubs in some special balm that Husky dogs use, and I can report that, whilst I have no desire to pull a sled with a load of blue-eyed fluffy dogs, I feel fine!



On my walks, I enjoy finding the lovely commemorative seats in West End and my bench of choice this time is located adjacent to Winterdown Road and celebrates Lucy Anna Massey 1976 – 2014. 'Remember me with a smile.' I smiled.

Last time I included a tip to help you understand, or sometimes even train your human, so here is #2. Humans keep a secret list of stuff which are NOT OK for you to eat. The first four are some of the things that I've discovered are BAD and will provoke some sort of reaction. Usually you will get shouted at; Poo (any kind), socks, plastic bags, and hard plastic (hurts when it comes out!), and these five are VERY BAD and may result in you being carted off to the vet; grapes, sultanas, avocado, onions and chocolate. There are of course lots more, but you'll have to work it out for yourself, because there are new items being added all the time. I just can't keep up.

I shall, of course, be entering my family into various categories in the dog show which is part of The West End Show at the end of August. It is, in my opinion, the high light of the West End calendar and I do hope to see lots of you there again this year.

Remember, I'm the black Flat Coated Retriever with the pretty pink collar, do stop and say hello.

Indy 

## GENEALOGY & MY HEART TRANSPLANT

Soon after my retirement I had a problem. "So when did you have your heart attack?" the doctors asked. "I don't know," I replied. They took me to Harley Street to see a specialist. "We don't think you should go home," the specialist said.

Then a Mr Walmsley came in and said, "I am going to explain to you what I am going to do." "No thanks, I said," just let's get on with it." So next day I awoke in intensive care and soon after I was transferred to a ward with a big supply of pain-killers. Strangely I did not need them.

The other specialist, Dr Fox, spent time with me, punching me in the chest to prove how well my sternum had been sewn up with titanium wire.

After a few days I was sent home with strict instructions on all the walking exercises I must do each day. This I did and soon felt quite well. I had a visit bringing best wishes from an old colleague. He was surprised to find me digging the garden. "Not much wrong with you!"

But what do I do with my time now?

I had had an interest in my genealogy and my uncle had spent time on it and left me his work. Members of the family had even paid a genealogist called Charles Drury to work on it in the nineteenth century. So I started work.

Fortunately by that time I had some sort of computer, consequently much of the recording could be done on that. We were lucky to have had Charles Drury: he apparently made his living in the nineteenth century from genealogy. I think he was retained by ancestor Walter Tyzack. Paul our glassmaking ancestor, left Benjamin some houses. Benjamin could not become a glassmaker because Paul's company was not big enough to support all the six children in the glass business. Father Paul had bought a house from a scythe maker who left some scythe-making tools, when he sold. I think that is why Benjamin became a scythe maker and started the Tyzacks in the tool business.

However, this was in Norton Derby but the next time we find Benjamin he is in Cuckney, Nottinghamshire. We might have missed him there but for Charles Drury who found our Benjamin Sizar.

Sixth son Benjamin, married Mary Goacher there, and whether the attraction was Mary or the River Poulter, with its water mills, I do not know. Curiously Benjamin took our family to Sheffield so that's where my new hobby as a genealogist started.

My uncle left me a great scroll of brown paper with his version of the family pedigree. But he had somehow managed to find a Tyzack with a contact in France. This proved a blessing because this contact named Raymond George, just retired from the French Air force, also needed a hobby and by lucky chance he had just come across a 16<sup>th</sup> century château. It turned out to have been built by Nicholas Tyzack in 1545. Raymond George turned out to be a great sleuth and discovered all kinds of facts about the Tyzack family who lived there. Raymond, decided to write a book about it.

*Don Tyzack*



### COBHAM MILL

I visited Cobham Mill recently and enjoyed learning about its fascinating history. Its existence is recorded in the Domesday Book in 1086. In 1990 the charity Cobham Mill Preservation Trust,

started restoration and in 1993 it was opened to the public. Delicious afternoon teas were served in the gardens by volunteers. It is well worth a visit. Open to the public on the second Sunday in each month from April to October. Entry Free. It makes a lovely Sunday afternoon outing and a opportunity for children and to learn and see the Mill in action!

*Angela Stockbridge*



## ‘ROYALTY’ COMES TO WEST END



Seven Eggs were laid by 11th April.  
Photo: Darren Blake.

Excitement ensued when activity began on the swans' nest and balloons and bunting appeared on the fencing signalling new life beginning in West End. Lots of newly hatched wildlife including seven cygnets, as well as coots, ducklings, moorhens, Canada and Egyptian geese all graced the pond, but the Swans rule in West End and the feisty Cob chased the geese off the pond at every opportunity.



Children and parents alike came from far and wide to experience the happy events, 9 eggs in total were laid, 7 hatched, 2 were infertile. The proud pen showing off her clutch of 9 eggs was posted on the West End Community Facebook page by Paula Richardson who also posted a lovely video of the first swan hatching!



Left: Poppy Houghton sent in this lovely image of 'West End's newest resident'.

Lee McOwan also posted the picture below on the Community page of the little cygnet who either fell or was tossed out of the nest, and was taken to the Swan Sanctuary where he is recovering well with a new family.



Left: 'Ready to Launch—for our first swim'. Six cygnets seen perching on the edge of the nest on Naomi Bedford's early morning walk.

Below:  
'Off on a Constitutional'  
Photo: Alice Austin



'Swans stop play on the Cricket Pitch!' Photo: Bridget Williams

The Swans go on a 'Royal' walkabout!

Minutes before this shot was taken they were seen peering through the Orangery windows of the Prince of Wales.

Photo: Dale Horsnell  
Deputy Manager  
Prince of Wales



One of our fellow allotment holders Graham Stevens took this photo of the swans walking through our plot this morning 13th June on their way to the River Mole—Mark Bisson

*Hopefully they will have made their new home on the river until they return to West End again next year!*

**This beautiful Wisteria adorns on the wall beside Myrtle Cottage.**

Photo: Nik Wilkinson





## IN MEMORIAM

### MARGARET DANE JULY 1935—JUNE 2024



Margaret was born in London to parents John and Miriam MacGibbon. The family lived in Kew. As a young girl Margaret loved Dachshunds and owned one named Gustav. Margaret, an only child, was educated at St Paul's Girls School, London. She subsequently trained as a Primary School teacher at Froebel College in Roehampton and taught at an Elementary School in Woodford Green. She also completed typing and Cordon Bleu cookery courses. Later she became a very keen photographer, gaining her Licentiate with the Royal Photographic Society. Margaret was an enthusiastic climber and belonged to a mountaineering club, where she made lifelong friends.

Margaret met her late husband, Frank, at the Intervarsity Club (IVC) and they married in 1970. They moved to West End in 1985. In 2004 they appeared on the BBC Antiques Roadshow at Hampton Court Palace. Margaret adored her grey cat called Merlin, who had only three legs when she and Frank inherited him.

Margaret was a member of numerous clubs and societies including: The Conservative Association, RAC Club, Dorking Camera Club, Winterdown WI, West End Flower Show Committee, (and enjoyed accompanying the judges on their rounds), Probus Club (through Frank), The Albany Club, Four Seasons Luncheon Club, The Claremont & Oxshott Arts Society, and many more. She was a 'Friend' of the Yehudi Menuhin School, and attended concerts regularly. She also supported the local West End Village News helping with local deliveries and became a 'Friend', contributing to the quarterly editions.

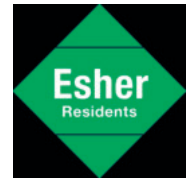
Margaret was a member of the congregation at Christ Church, Esher. She supported many events including the annual Music on The Green concert, helping with the organisation and catering. She travelled widely to the US, Germany and India to visit Frank's family members, including his sister. Margaret visited Switzerland annually for mountaineering holidays, meeting up with like-minded friends, and many other European countries. Margaret always enjoyed sharing her photos and stories of her experiences.

Margaret was an extraordinary person with amazing enthusiasm and energy for everything she did. She was very proud of her beautiful garden in which she entertained her many friends, and was known for her delicious speciality of 'cream cheese and ginger' sandwiches! She was a remarkable and forthright lady with a sense of humour who loved opera and always dressed with style and was very particular about her hair! She was a well loved and popular member of the West End and local community and will be very much missed by all who knew her.

Angela Stockbridge



## COUNCILLORS' CORNER



News from your local Elmbridge Ward councillors (EBC):

First of all congratulations to Village News on 20 years; it's always informative and entertaining and the local photographs are a delight.

Residents sometimes ask about what their local councillors actually do and the hope is now to keep you a bit more informed as, although we do have our own postal newsletter, it is published less frequently than Village News. However the web site is up to date ([esher-residents.com](http://esher-residents.com)). West End is part of the Esher Ward for EBC that also covers the east side of Hersham, Lower Green and Esher itself. Esher has 3 independent Residents' Association (ERA) councillors: Simon Waugh (Mayor 2022-23), Richard Williams (Mayor 2023-24) and new boy Simon Leifer, ERA Chair. They receive no salary and only minimal allowances for postage etc.

So, what have they been doing recently for West End?

### Park Close footpath

The battle to re-open the Park Close footpath trundles on. Some 100+ residents have signed a petition to have it unblocked so it certainly does matter. We are working with the Ramblers Association but the overall responsibility for this lies with the behemoth that is Surrey County Council. We are continually pressing them to take action and it may be that we will have no option but to appeal to the Secretary of State as Surrey are so slow. We will update you when more happens.

### West End car park opposite the Princess Alice Hospice

The big recent success is getting the white lines and disabled bays repainted at the West End Rec car park which belongs to EBC. The next stage is to get the signage replaced so residents know what the contact details are for both the rec and the car park. Hopefully by the time you read this the signage will be there as it is needed.



*The repainted West End car park (taken at night as the car park is generally full in the day!)*

### Moore Place Golf Course

The future of Moore Place golf course is also a matter of great concern. Your councillors have succeeded in having it listed in the draft Local Plan as a 'Local Green Space' which if approved by the Government appointed inspector will give it even greater protection from development in addition to its existing Green Belt Status. We are watching this very closely.

As someone recently said, "We don't need big ideas, we just need the small stuff right" – a good mantra we try to follow!

If you want to contact us please email on [helloesher@esher-residents.com](mailto:helloesher@esher-residents.com)

Simon Leifer, Simon Waugh & Richard Williams





## ST GEORGE'S CHURCH, WEST END

Spring is dragging its heels somewhat - unpredictable weather meaning winter coats and wellies still need to be at hand and the church heating still needs to come on for our Sunday service.

Our March and April services covered:

Mothering Sunday, where every member of the congregation received a posy of daffodils. The daffodils had been kindly donated by Garsons, Waitrose and Buds and Blooms - and lovingly put into little ribbon-tied bunches by a team from both our churches.



Palm Sunday - the usual Palm Crosses are distributed and lead us up to.... Easter Sunday - Easter Gardens are displayed both inside and outside the church and the "stone" is rolled away from the tomb on Easter morning.

St George's Day - attention was drawn to the church by the St George Bunting flag displayed on the fence.

We have always been delighted to have a good number of people to our Sunday 9am services - but recently we have welcomed several newcomers - now averaging a congregation of about 30 people a week. Since the Prince of Wales re-opened, we have become regular visitors for coffee after church - and find that a wonderful opportunity to chat and get to know each other better.

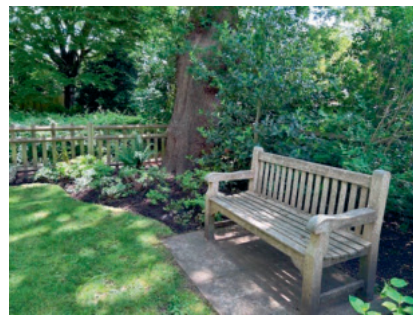


**Ann Willig** Rather suddenly and unexpectedly Ann died in March - and the lovely service of Thanksgiving for her life was held in Christ Church on 26<sup>th</sup> April. Everyone was grateful to see at the back of the church a display of a huge array of her artwork. Her sister, Mary, hopes to arrange an exhibition of her work in the near future.

Ann had lived in West End since the 1980s and was an integral part of the community. She was a member of the WI and for many years organised collections for both Christian Aid and The Children's Society. Ann was an amazing artist and we were privileged to have her illustrate our West End Village Recipe Book (you may have bought a copy - so do have a look!). She was heavily involved in supporting St George's Church and had been on our committee for many years. We will miss her a lot.

**Gardening** Over the weekend of Friday 24<sup>th</sup> and Saturday 25<sup>th</sup> May, 14 volunteers from St George's congregated in the garden, suitably dressed and equipped with tools - to tackle the undergrowth that was encroaching and threatening to rot the surrounding fence. However, not only did we manage to completely clear the area at the base of the fence - we also weeded the entire garden, pruned and shaped the shrubs and shaped and neatened all the edges of the lawn. A new bench, in memory of Pam Parry from Talbot Lodge, was erected in the back garden, now making 3 places to sit and quietly contemplate life - and our beautiful garden. Please stop by and enjoy it.

St George's Garden



**Historic visit** The Churches Conservation Trust organised a tour on 29<sup>th</sup> May to "discover the town of Esher, its numerous historic connections and how royalty has influenced local church design." There were twenty-two participants who had travelled to Esher from various parts of the UK and indeed the world; one of their number came all the way from Australia to take part. Their visit covered Old St George's Church (behind the Bear), Christ Church and finally our very own little tin tabernacle! They were in awe of the wonderful condition of our church (given that it was built nearly 150 years ago!). After a brief overview of St George's and why it was built, they spent a while looking at our Bible and the Font. The Bible is very special as it was a gift to the Duke and Duchess of Albany on the occasion of their marriage in 1882. The Duchess often attended St George's at West End, and when she left Claremont in 1916, she decided to give this beautiful Bible for the use of the Church. After taking lots of photos (including our relatively "new" stained glass windows of St George and the Dove) they then went on to visit Claremont.

**Village Show** This is the highlight of our fundraising year. As our church is nearly 150 years old (it was only meant to last 7 years!) there is always something needing to be done to keep it functioning and beautiful. So, this is a great opportunity to raise much needed funds for this work.

As usual we will be having our renowned Cake Stall - and also a Gift Stall. Please pop in and see the church and buy something while you are there! The Christ Church team, as usual, will also be serving cream teas



and cakes in the Village Hall during the afternoon. We all look forward to this wonderful Village event - and are grateful to be part of such a lovely community.

We shall continue to be closed on any 5<sup>th</sup> Sunday of the month. This allows our congregation to join up with our Christ Church congregation - and enjoy the bonus of a beautiful choir. We will be putting a notice on the gate to remind people of the closure.

Please do join us at as many or any of the services that you can. You are always very welcome.

For more information about all our services (at both churches)

please do visit our website: <http://www.esherparish.org.uk>

Here you can find everything you might want to know about the Parish of Esher including Music on The Green.

Finally - thank you, as always, for your continued support and we wish you all a very sunny and happy summer.

*Andrea Lindow and Bridget Williams  
Photos: Kathryn Chapman, Parish Children & Families Worker  
and Stephanie Parcell*





## WINTERDOWN WI

We were so sad to hear about the passing of our friend Margaret Dane. She generously opened her garden for us, would volunteer to do the vote of thanks, loved her roses, made delicious chocolate brownies, was a perfectionist, always looked so perfectly made up and dressed so smartly. She was a loved member and friend to us all.

Margaret, seen here on the far right in January this year. We thought we would have a Scottish flavour to our members meeting as it was close to Burns Night. Our talk was on kilts and their origin by Paul Henry entitled "From fleece to pleats".



Margaret was certainly prepared as always to join in the fun and dressed in a kilt along with some other ladies at the meeting. She will be so missed.

*Christine Grove, Secretary*

## THE PRINCE OF WALES

To our lovely neighbours,



If you haven't visited The Prince of Wales for a while, then you're in for a pleasant surprise. We've listened to all the feedback given during our first 6 months and made significant changes to bring you the warm and welcoming local pub you deserve. We've got a new team in place, including myself as the new General Manager of the pub, supported by a fantastic management team.



Our new head chef Paul is super excited to bring you our summer menu, full of fresher dishes, with well-sourced ingredients and daily changing specials. Our drinks menu has had a shake up too, with a brand-new extensive wine range and summer special cocktails, perfect to enjoy in our blooming beer garden.

So, whether it's drinks and lunch in the garden, a pint and nibbles in our bar, or a special evening meal in the orangery that brings you to us, I look forward to seeing you soon.

*Charlie Higgins,  
General Manager of The Prince of Wales  
Photos: Me Louis*

## ESHER FRENCH CIRCLE

**Esher's French Circle takes the train for its summer holidays.**

**Thierry Viennois' talk about Le Petit Train de la Mure was the last before the Circle's summer break**

A regular visitor to the Esher French Circle, Thierry Viennois rounded off its 2023-2024 season with an illustrated talk (en français, bien sûr) about one of France's least known but most scenic railway lines, Le Petit Train de La Mure.

In spite of its idyllic mountain setting, this narrow-gauge railway was first built in 1888 with a practical, industrial purpose: its carriages hauled anthracite from the coalmines of the Matheysin region to the city of Grenoble. It also carried miners and other mine workers to and from the mines.

After its summer break, Esher French Circle will start its 2024-25 programme on Wednesday 16 October, in West End Village Hall. The monthly talks – in French – are given by native or fluent French speakers, in a relaxed and convivial setting. Refreshments are provided and there is ample time to socialise and practise your spoken French.

The meetings are on the third Wednesday of most months. The doors open at 7pm and the main talk starts at 7.30pm.

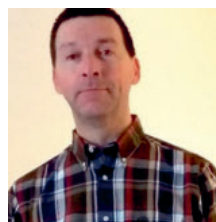
Details of the talks and the speakers are available on the club's website:

[www.cerclefrancais-esher.uk](http://www.cerclefrancais-esher.uk)

or the club's secretary:

Brigitte Tiller E [brigitte@ptiller.com](mailto:brigitte@ptiller.com) M 07896 233728

Thierry Viennois' talk about Le Petit Train de La Mure attracted a good audience in West End's Village Hall on 19 June, as well as quite a few who were able to watch it from further afield, thanks to Zoom.



Originally built to transport coal from the mines to Grenoble, Le Petit Train de La Mure is now a popular tourist attraction.



As Thierry Viennois pointed out, a ride across vertiginous viaducts in the narrow-gauge Petit Train de La Mure is not for the faint hearted.

The Matheysin region of southern France is known for its stunning scenery.

*Article and Photos:  
Peter Prowse*

## WEST END BRIDGE CLUB

We are a small club which meets every Tuesday afternoon in the Village Hall.

We play friendly bridge and new members are very welcome.

We are not competitive and members only enjoy a pleasant afternoon with like-minded people.

Anyone interested, requiring more information should contact Sandra Elms on 01372 466433





## THE WEST END SPORTS & SOCIAL CLUB



PLEASE VISIT THE  
WESSC WEBSITE FOR  
THE CALENDAR OF  
EVENTS  
[www.WESSC.org](http://www.WESSC.org)

## WEST END SPORTS & SOCIAL CLUB

### SPECIAL



## WEST END GOLF SOCIETY



Anyone wishing to join the  
WEGS can call  
Dave Morgan on  
07956 221566



## WEST END ESHER CRICKET CLUB

Dear Westenders,

The sun is finally shining and as you will all have noticed, the cricket season is in full swing. I have to start by saying a huge thank you to my predecessor who stepped down from his role as Chairman after an astonishing 19 years in the seat. Mike Bacon has put a huge amount of time and effort into making our wonderfully diverse and inclusive cricket club the institution it is today. As you can see he's still turning out to play for us!



The club I took charge of in November is going from strength to strength. Our 1<sup>st</sup> XI under captain Jon Carter are top of the league table having made an excellent start to the campaign and our 2<sup>nd</sup> XI under

captain Suraj Giani are fourth in a very closely fought division. Our T20 team skippered by Tyler Clark made a winning start on Wednesday evening with an emphatic win over local rivals Claygate. Finals day will once again be here at West End on Sunday 11<sup>th</sup> August and the team will be hoping to go one better than last year and lift the trophy. More colourful cricket on the green is being played by our over 40's side, resplendent in their new kit (modelled by Mike above) and Paul Campbell's team are going strong, avenging defeat earlier in the season with a win against Whitely Village on Tuesday. Paul Jones' Sunday Squad are also continuing to play some great cricket and having a lot of fun whilst they are at it with a number of our younger players stepping up to the adult game.



Speaking of which – our Junior section continues to thrive with Colette Mackintosh in charge. We now have 122 juniors of all ages, both boys and girls. Here's our under 9 team celebrating victory on Sunday morning. Next year will be our 150th Anniversary and we would like to go on tour to South

Africa as the club has lots of ties with the country. We are looking for sponsors so if you are able to help please contact me directly [chairman@weecc.co.uk](mailto:chairman@weecc.co.uk)

**Our annual Cricket Sixes festival and  
PARTY BY THE POND will be on 25<sup>th</sup> August.**  
Tickets available behind the bar at the club or through

<https://fixr.co/event/party-by-the-pond-2024-tickets-903545535>

Finally you can follow the cricket if you're away from the village on our youtube channel @WestEndEscherCC with our home matches being live streamed.  
Hope to see you on the boundary soon,

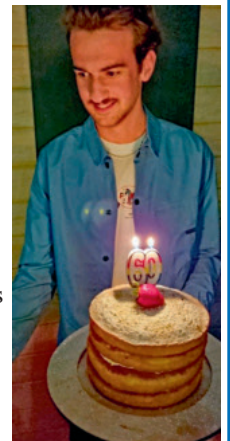
*Chris Hambleton, Chairman West End Escher CC*

## WEST END SPORTS & SOCIAL CLUB MUSIC NIGHTS & SPECIAL BIRTHDAYS

There's been a lot going on at the Club recently, with music nights and special birthday celebrations!

Bar Manager, Richard Jenkins, celebrated his 60th birthday with a party in the Clubhouse and shared the occasion with Avril Poat whose April birthday was postponed owing to a short hospital stay!

This delicious cake was made by Richard's daughter Alice and presented to them by Euan McLeod (Richard's nephew) shown here. Euan is currently working on placement at a London based recycling company. He will be returning to Bath University soon to complete his last year studying Engineering.



Dan Snell acted as chef-in-charge of the BBQ and everyone enjoyed the meaty beefburgers cooked to perfection! Music and dancing ensued and the whole evening was enjoyed by all who attended,

*Richard Jenkins, Bar Manager*



## THE SURREY & SUSSEX FIRE BRIGADE

Should you have any concerns for further advice  
Visit: [www.surreycc.gov.uk/safeandwell](http://www.surreycc.gov.uk/safeandwell)

Call free on 0800 085 0767

Text to 07971 691898 with your name, contact number, post code, your primary concern, such as smoke alarms, a disability or safety concern.

**RING 999 IN CASE OF EMERGENCY**





## WEST END MOTOR CLUB END OF AN ERA



*Inaugural run 2006—Clecy—David*

Mainly due to ageing of members and difficulty finding suitable accommodation, it was agreed that our long-standing annual event, known as the Pocklington Classic Rally, must reluctantly cease. The death of Eileen, widow of Charles, for whose memory the event began, rather confirmed the decision.

51 members took part in these rallies over the years, making 224 rally runs. Special mention must go to David Rolfe who attended all 15 rallies and in all we raised over £25,000 in aid of Macmillan Cancer Support.

Roger, our member of 'Lockdown' Austin 7 Cambridge Special fame and unofficial Club Photographer, could not let the event pass without note and arranged a final 'End of an Era' rally and lunch to the Onslow Arms in West



*Final run 2021—Wiltshire —David*

Clandon complete with alternate mapped routes in case we did not know the local area. It was well attended and voted a huge success. He also produced a short and sweet history of the event accompanied by many Hundreds of photos from past years, and a further £500 plus was raised for Macmillan Cancer Support.



*Line-up at the Onslow Arms*

We have broken with tradition in that normally this is not our biennial turn to appear at the West End Summer/Flower Show on August Bank Holiday Saturday. But we have succumbed to an invitation to attend, as it is the Show's 70th Anniversary. We intend to support this with a small exhibition with a few more interesting and rare vehicles, so we hope to see you all there.

Due to hard work and exploration by Ken Berry we are now fully established at our Tuesday morning coffee/ breakfast meeting at Brooklands Museum. To avoid ennui and to ensure choice, Ken is constantly finding new possible venues for that meeting, allowing visits to various golf clubs, cafès, and other hostelrys from time to time. Attendance on Tuesdays at around 10.00am continues to increase, the variety of vehicles last visit ranging from a very expensive Porsche, to a proper American Ford Ranchero pick-up, an Aston Martin DB6 and no less than four Austin Sevens!

We recently returned to the Crown PH in Capel for a fabulous lunch in this pretty family run pub organised by Richard Eves. Together with wives and partners 19 of us enjoyed a pleasant run and day out using our classic cars.



*The Crown—Capel*

We are an 'unofficial' motoring section with no committee, fees or bureaucracy, with our base at West End Sports and Social Club where we have 'noggin and natter' nights on Thursday evenings to which all are welcome.

*Article: David Rolfe*

*Photos: Bob, Ken, Roger*

## ARENA CROSS UK 2024 FINALE WEMBLEY JACK BRUNELL CHAMPIONSHIP SUCCESS



Jack Brunell in action (above), representing Stark Varg was recently crowned British Champion at the Arena Cross UK 2024 Finale held at Wembley. It has taken 10 years for Jack to achieve success.

The historic element to it was that for the first time in any motorsport championship worldwide an electric machine had beaten traditional combustion engines to win a series. Jack was presented with a special golden axe by the founder of Stark Future in recognition of his achievement. (Jack lives in Windsor and is the son of Sarah and grandson of club member and local resident Avril Poat).

*Sarah Brunell, Photos: Jack Brunell*



GARDEN CENTRE • FARM SHOP • BEVAN'S BUTCHERS • THE ORANGERY TEA HOUSE • PICK YOUR OWN

CONGRATULATIONS ON  
20 YEARS OF WEST END VILLAGE NEWS!

**GARSON FARM**

EST. 1871

**PICK YOUR OWN**



PYO ENTRY BY FARM PASS ONLY - BOOK ONLINE AT GARSONS.CO.UK



### FRIENDS OF THE VILLAGE NEWS

We would like to thank  
the following  
'Friends' of the Village News for  
Their generous donations:  
Peter & Naomi Bedford  
Ken Berry  
Gerry Dowling  
Donald & Sandra Elms  
Mr & Mrs R.V. King  
Rob Lowe  
A J and B Maddows  
Malcolm & Kay Parsons  
Mike Purchase  
Derek Richardson  
David Rolfe  
Denis Roux  
J & J Stadius  
Peter & Pat Thompson  
Simon & Veronica Whittally  
And also donors who wish to  
remain anonymous.

If you would like to become a Friend  
Please contact our Treasurer,

derek.richardson@garsons.co.uk



### Bespoke Catering Of Formal & Informal Events



WEDDINGS  
MEMORIALS  
CELEBRATION PARTIES  
CHRISTENINGS  
CORPORATE EVENTS  
HOUSE WARMING PARTIES  
THEMED PARTIES  
SMALL PRIVATE FUNCTIONS  
DISHS AND PLATTERS

ELIZABETH TRELIVING

**HOME COOKING BY ELIZABETH**

The Showroom 1 Church Road Great Bookham KT23 3PD

T: 01372 453206 M: 07712 760175 E: ejtreliving@aol.com

Or visit our website [www.homecookingdirect.co.uk](http://www.homecookingdirect.co.uk)

### West End Village Hall



Ideal for children's parties, meetings,  
functions and family occasions.

Adult parties strictly for Village  
Residents only by special arrangement.

### TO BOOK

Visit: [wevh.org](http://wevh.org)

Mail: [hirehall@wevh.org](mailto:hirehall@wevh.org)



ESTABLISHED 1850 Telephone - 020 8979 5762

BRIDGE ROAD, EAST MOLESEY,  
and HIGH STREET, ESHER.

**WHEATLEY & SONS,**

(Successors to J. Wheatley & Son, Ltd.)

**Builders, Contractors,  
& House Decorators.**

GAS, HOT WATER and SANITARY ENGINEERS,  
PLUMBERS, GLAZIERS, and BELL HANGERS.

Jobbing Work of every description with Bricklayers, Plasterers,  
Carpenters, Cabinet Makers, Painters, Paperhangers, Glaziers,  
Gilders, Plumbers, Gas and Bellfitters, Tinmen, Smiths, &c.

Carpets taken up, Beaten and Relaid. Stoves and  
Ranges Supplied and Set. Boilers Cleaned. Kitchen  
Utensils Retinned.

HOUSE DRAINAGE & VENTILATION A SPECIALITY.  
DRAIN TESTS AND REPORTS.

PLANS prepared and advice given upon all matters  
connected with New Buildings, Additions, Alterations  
and Repairs.

FUNERALS FURNISHED in best style and conducted  
to any part of the country. Cremations arranged.  
Monuments, Brasses, Memorial Windows &c.

HOUSE & ESTATE AGENTS. FIRE & LIFE ASSURANCE.  
RENTS COLLECTED. VALUATIONS FOR ALL PURPOSES.

### NO JOB TOO SMALL

Telephone 020 8979 5762

Fax: 020 8941 7388

Email:

[wheatley\\_sons@btconnect.com](mailto:wheatley_sons@btconnect.com)

### B & B IN THE VILLAGE



Bed and Breakfast available. All rooms are double bedrooms,  
made up of king size, and super king beds. The super king can be  
divided into 2 single beds. All rooms have en-suites and also tea  
and coffee making facilities, mini fridge  
and water/juices provided.

Virgin cable TV and WIFI

A maximum of 2 adults and 3 children per room,

A warm welcome awaits you. For further information call  
Edwina Halanen (West End Lane)  
On 07721 091184

### VILLAGE NEWS WEST END

Please make a diary note:

Autumn Friday 30th August by 1pm

Christmas 2024: Friday 22nd November

Please contact Angela Stockbridge Email:

[angelastockbridge115@gmail.com](mailto:angelastockbridge115@gmail.com) 07817 498531 or 01372 460703

The Village News is supported by local organisations including: the  
West End Village Club, West End Motor Club, The West End Village  
Show Committee, Garsons, Winterdown WI, the late Richard Gale,  
West End Village Hall Committee, The former West End Residents'  
Association, Advertisers and personal donations. The newsletter is  
printed by Impress Print Services of Hersham and Garsons. Please  
note the newsletter can also be found on the Garsons website

[www.garsons/Community Page](http://www.garsons/Community Page) and the

[www.AFC Westend website](http://www.AFC Westend website)

**We thank you all for your continued support.**