



A VERY SPECIAL TROPICAL WEDDING!



Tony Currie finally decided it was the right time to pop the question to Tricia Fox whilst on holiday in Florida in February. Tricia said it was a wonderful surprise after being together 48 years! Tony and Tricia married on Crandon Beach, Key Biscayne, Florida, amongst the palms on a beautiful day.

Only after hastily organising the relevant officials and signing the correct paper work, and Tricia had found a suitable dress which she purchased from Macy's, were they able to go ahead with the ceremony.

Tony and Tricia have lived in West End for many years and are popular members of the Social Club.

Many congratulations to you both.
We wish you many more happy years together.

WELCOME TO ALL NEW WEST END RESIDENTS

We welcome new residents to the village and hope that you find our newsletter informative and entertaining! We have a number of well established clubs and societies in the village of which you can be part at your own discretion. We hope you settle into our unique village life and enjoy the lovely environment, its wildlife, woodlands and friendly community spirit with all it has to offer.



VE DAY 80th ANNIVERSARY COMMEMORATIONS

Victory in Europe Day is the day celebrating the formal acceptance by the of Germany's unconditional surrender of its armed forces on Tuesday, 8th May 1945. It marked the official end of World War II in Europe and the Eastern Front, with the last known shots fired on 11th May. VE Day itself is on 8th May. However, this year's bank holiday Monday 5th May has been officially dedicated to community celebrations!

I am sure the residents of West End would like to commemorate this very special occasion in their own way. A picnic on the village green could be considered, weather permitting or you might like just to celebrate in your own homes or gardens or even with a street party!

Whatever your choice, we should bring this unique village community together once again on the 5th May to celebrate this special occasion in the spirit of that memorable day in 1945!

Stella Lynn recalls the VE Day party held on the village green in 1945 and a photograph being taken of the children in West End. The photograph included Stella and her sister Carol (nee Handison), Ann, Margaret and Ian Flippance, Hazel Hunter (nee Bullock), Jean and Ruth Edwards, Brian and Colin Hedger, Teddy Dunnage and Colin & Janet Ralph and others. We hope to include the photograph in our next edition, together with an aerial photograph of the village taken in 1945 and images of the forthcoming celebrations in May!



Painting
PLEIN AIR
Esher

Artists of all skill levels, are welcome to paint or draw outdoors together, in the company of a small group of your friends. Join us in our Peaceful Tranquil Garden in West End, Esher.

The Garden is open from 11 am to 4 pm for private bookings from May to August 2025

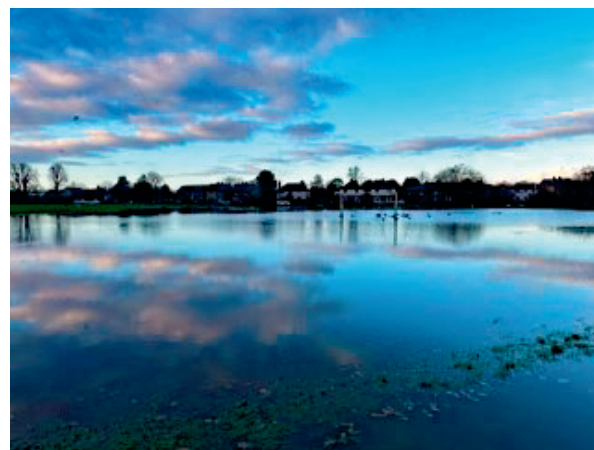
- Donation of £10 goes to The Princess Alice Hospice
- Bring your own Art Supplies and Lunch if wanted
- No Instructor but peer support of your friends
- Tea, Coffee and Cakes will be provided all day

For those interested in viewing only the Garden, we will be Open for **One Weekend Only** on **Saturday July 19th & Sunday July 20th**
No Booking Required.

For more information email us at:
peajaya@btinternet.com

Janet Eggar photographed this view of the flooded green taken from St. George's Church following the mains water leak on Portsmouth Road on 1st/2nd December.

The broken pipe sent water gushing down Hawkshill Way into the village, continuing for several days flooding the roads and green causing a great deal of concern, before it could be repaired by Thames Water.



Dave Page, the Elmbridge Countryside Estates Officer has produced a superb West End Common and Surrounds Drainage Map and report, which is in the Special Supplement included with this newsletter, together with the article on the Celebration of 150 years of West End Esher Cricket Club!

IMPORTANT PLEASE READ.....

Call 999 for Emergencies only.
Call 0800 555111 for Crimestoppers.

Call 101 - Surrey Police for General Enquiries and non-urgent matters.

This number will also transfer you to Esher Police Station, which is open from
09.00-17.00 hours Monday to Friday.

Sgt 3528 Nick Reynolds is Sgt for Esher and Claygate
PC 3435 Ian Hallam is the local Esher Officer
Officers can be contacted by dialling 101 or email:

Officers can be contacted by dialling 101 or email: **Please note: the email address has changed for the Elmbridge Policing Team to elmbridge@surrey-police.uk**

Contact for Neighbourhood Watch, is now :
<http://elmbridgehw.ourwatch.org.uk/>

Please report suspicious incidents via 101, or in an emergency 999.

You can also contact Surrey Police online:
<https://www.surrey.police.uk/contact/af/contact-us/>
Or Facebook <https://www.facebook.com/SurreyPolice> &

IN THE KNOW—SURREY & SUSSEX

Please report suspicious incidents via 101, or in an emergency 999.

- ♦ Cars continue to be stolen. If you have a modern car it's time to check whether your vehicle is eligible for a security update. We see vehicles that have been stolen where the updates are available but haven't been installed. Contact your main dealer to find out more. Always remember to keep your car keys and fobs out of sight and if you have a keyless car use a signal blocking pouch. A variety of Trackers are available and can be fitted. When purchasing a new vehicle make sure it is legitimate. Check the V5 and service history, the VIN, (Vehicle Identification Number) and carry out an HPI (Higher Purchase Investigation)
- ♦ There have been a number of bicycle thefts reported in the area—please keep yours safely stored and securely padlocked.
- ♦ Burglaries have also been reported in the area. Ensure that windows and doors are securely locked at all times. Even the smallest open window can be an entry point!



BECOME A FRIEND OF THE VILLAGE NEWS

As we look forward to our 21st year of publication in 2025, we face a backdrop of ever increasing costs. In order to keep the Village News viable, a number of supporters have made donations to become a 'Friend of the Village News'.

This would involve making an annual donation of £50.00 to commence whenever feasible, with the opportunity of having your name published in a list of 'Friends of the Village News' or to remain anonymous if preferred.

Alternatively, contributions in units of £10 would also be very welcome.

If you would like to become a Friend or simply make a donation, the bank details are:

A/C name: Village News (West End)

Account no: 56514794 Sort Code: 60-08-04

For further information on becoming a Friend, please contact our Treasurer,

Derek Richardson at

derek.richardson@garsons.co.uk

WEST END PLAYGROUP

It is with great sadness that we have learned that the West End Playgroup closed on the 31st January 2025.

We would like to thank the Manager, Helen Yates, and all her staff who for so many years provided a welcoming, friendly and active playgroup in the Village Hall.

The staff worked tirelessly to make the children happy, teaching them social skills and encouraging them to participate in various activities, including circle time, story time and their delightful annual Christmas nativity. They could often be seen trudging across the green in high-vis jackets to the ponds for 'pond dipping', to Garsons farm or across to the allotments. The team always helped with the children's sports activities at the annual Village Show, helping to make the day fun for all the children entering the various classes.

Many children from West End and beyond who attended the playgroup will all have many happy childhood memories of their time spent in Helen and her team's care.

We wish Helen and her staff all the very best for the future.



West End Village Hall



Ideal for children's parties, meetings, functions and family occasions.
Adult parties strictly for Village Residents only by special arrangement.

TO BOOK

Visit: wevh.org

Mail: hirehall@wevh.org

WEST END BRIDGE CLUB

We are a small club which meets every Tuesday afternoon in the Village Hall.

We play friendly bridge and new members are very welcome. We are not competitive and members only enjoy a pleasant afternoon with like-minded people.

Anyone interested, requiring more information should contact:
Sandra Elms on 01372 466433



DEFIBRILLATOR

OUTSIDE VILLAGE HALL

No training required - anyone can use it

Dial 999 and give the location

You'll be given a key code to open the box

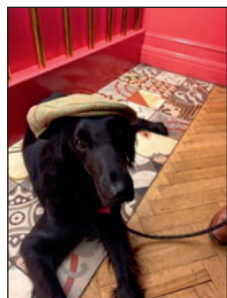
Follow written instructions on the portable unit
Verbal instructions are provided once turned on.

INDY'S SPRING DOG BLOG

Is it me or has the sky fallen in? I mean it has been constantly grey and wet, very wet. Mind you, the burst water main presented a wonderful opportunity for splashing and paddling. But enough is enough so now, every morning, I cross my paws and wish for spring sunshine. Hopefully we'll get some soon because West End looks so pretty in the spring.

It seems ages ago but I hope you had a wonderful Christmas. I certainly did. I love hunting for my presents under the tree and opening them with my family. I am such a lucky girl.

Also, this Valentine's Day I was given heart shaped dog biscuits ALL DAY and then we



went away for the weekend to the country. I also got to wear Daddy's rather fetching country cap. Can you imagine?

Sadly, at twelve years old, my very good friend Flossie joined the dog angels just after Christmas. Her mummy, Lee, misses her greatly but we all have to accept that us dogs only live a fraction of a human life. The life we share though is packed with joy and special memories. Happy stick chasing, Flossie.

The other day, my mummy took me to the vet for my booster injection and checkup and I have to say she rather embarrassed me. We were sitting in the waiting room when a very nice lady opposite us spoke to me. I'm always polite and enjoy a good chat, so I smiled and crossed the waiting room as it looked like a good fuss was on the cards too. At the same time the vet came to call us in, so my mummy stood up, I pulled on the lead, mummy tripped over her handbag and sprawled flat on the floor. The crash made me turn round and there she was lying on the floor next to me. I'm not supposed to lick faces, but I was a little concerned she'd hurt herself so as she was just lying there, I did steal a lip smacking slurpy kiss on her cheek. Everyone laughed, including Mummy, so I wagged my tail and knocked the stock off the shelf. It was chaos! Such fun. I just hope we're not on the vet's blacklist.

Now, I don't often go to Garson's because as we all know, us dogs are not allowed inside although they do provide water bowls outside if you are thirsty. Anyway, I digress. There was something very fishy at Garson's when I stood waiting outside with my Nana. It smelt just like the seaside, and I was hoping for a good salty swim with a bit of body surfing and wave jumping thrown in when my olfactory antennae alerted me to The Seafood Shack. I sat with great anticipation and had a very engaging chat with the very nice man inside who was telling me how his lovely fresh fish is caught in Weymouth and sold every Friday and Saturday at Garson's. Looks lip smackingly delicious. I do love a fish supper, don't you?



As you know, I enjoy a sociable chat so if you're nice and friendly and relish a good run around, do come and say hello. I'm the flat coated retriever with the pretty pink collar.

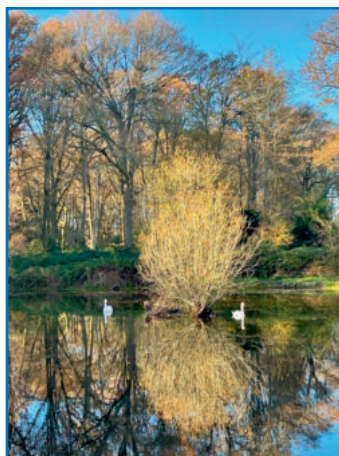
Indy



The devoted little Coot sitting on her nest on West End Pond.

NEWS FROM THE WEST END PONDS

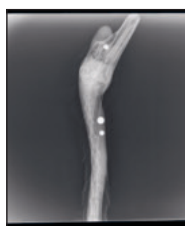
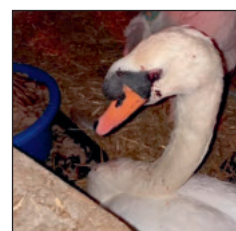
THE WEST END SWANS



We are delighted to see that our Swans have returned to join the village wildlife on both Chequers and West End Pond again this year. Peter Bedford captured this stunning image of the swans amongst the beautiful reflections on Chequers Pond. The swans have now started to build a nest which is very close to the roadside edge of West End pond!

PLEASE HELP PROTECT OUR VILLAGE SWANS

- Keep dogs under control on leads at all times when walking near the West End ponds.
- Drive slowly through the village, several birds have been injured or killed in the past by dogs off the leash and drivers going too fast through the village.
- Remember too much bread can cause health problems, it is better to feed them fresh leafy greens..
- Do not feed or encourage the swans near the road. If you have small children please be aware that swans can be very aggressive therefore it is advisable not to get too close.



Be aware that a number of swans in Surrey and across England have been badly injured and even killed by catapult and air rifle pellets. These two awful images show injuries sustained from pellets of a catapult. If you see any suspicious behaviour or injured birds, please contact the

Swan Sanctuary at Shepperton
on 01932 240790.

Thank you.

ON TOAD PATROL!



David Ford and Clare Hyde in Winterdown Road collecting the wayward toads!

The annual ritual of collecting toads from the roads in buckets along West End Lane and Winterdown Road took place in early March. David Ford and Clare Hyde were out with buckets and torches in hand as the toads traversed the dangerous terrain from Chequers Pond to the West End Pond looking for a mate. Thank you to all the volunteers who spent their evenings collecting and returning the toads safely to the pond! Sadly some met their end on the roads, despite the efforts of all the volunteers!

Angela Stockbridge

COMPUTERISED TOMOGRAPHY AND HOW IT ALL STARTED IN 1968!

EMI ran a programme for apprenticeships for a five year traineeship for young persons who were given six month periods in which they were taught skills associated with electronic equipment. I was one of these. An early period was spent with Godfrey Hounsfield in which I helped him in his task of designing a radar system we called Red Sea. However although I learned a lot about circuitry, half way through the project was cancelled.

I lost track of Godfrey then for several years during which time he made a big contribution to EMI Computer design. EMI then sold its computer business to ICL But the sale did not include Godfrey.

Several years later I was given a financial post as assistant to Dr Broadway, the Chief of the Central Research Lab. Once again I came across Godfrey, but he had got a bee in his bonnet about a computer memory idea. EMI had sold its computers so this was something of a problem. We could not stop him spending money on this project. We referred to it as the "CT Scanner".

Dr Broadway called Godfrey and myself into his office to try to stem the financial leak. "This is what I'll do" he said. "You two go up to the DHSS in London, with Godfrey's idea. If you can persuade them to give you any funding for the idea, I will open a works order! If not. Finish!"

We spent an hour or two with the DHSS officers then the boss, Clifford Gregory said: "OK £2,500, but that's it!" "See what you can do with that." That was the end. Except his parting shot: Think of all the bandages and stockings we lose for £2,500." And we went home. Next day with Dr Broadway:- "Well how did you get on?" "£2,500" I said. "Oh, well I did say if you got ANY backing I would open a works order!" And so it started in 1968.



Above: The prototype of the CT scanner, and Godfrey shows the apparatus to Prince Philip, and right: Sir Godfrey Hounsfield



In November 1972 the scanner was displayed to 2000 doctors at the Radiological Society of North America's annual meeting in Chicago. Dr. Ambrose gave a lecture on his clinical trials there. Dr Ambrose received a **standing ovation**. Finally EMI sold the whole idea to companies already in the medical business.

Article: Don Tyzack



The Covid-19 Memorial Wall, London

Photo: Angela Stockbridge

THE FIFTH ANNIVERSARY OF THE COVID-19 PANDEMIC

A national service was held at the Covid-19 Memorial Wall, London on the 9th March to remember all those who sadly lost their lives, continue to be affected by the deadly virus. Tributes were also paid to the NHS staff and others who put themselves at risk when caring for the sick.

COBHAM MILL THE HIBERNATING DINOSAUR AWAKES



Nestled in the tranquil English countryside, the Cobham Watermill stands as a silent sentinel of history. For centuries, this remarkable structure has witnessed the ebb and flow of time, much like a great hibernating beast. It's as if the mill is a slumbering dinosaur, curled up in its lair for winter, dreaming of spring

when it roars with life and purpose.

The Mill with its sturdy walls and weathered wooden beams, is a testament to a bygone era. Once a bustling hub of activity, where the rhythmic turning of the mill wheel kept pace with the seasons, it now lies dormant, cobwebs gathering in the rafters, waiting patiently for the touch of skilled hands to bring it back to life. The dedicated team of volunteers and historians know that this period of dormancy is merely a prelude to renewal. Like devoted caretakers, they tend to the mill's needs, ensuring it remains in good health, even as it sleeps.

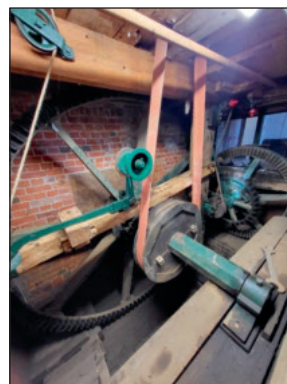
Underneath its clay-tiled carapace, the great beast is waiting. As winter's frosty grip begins to thaw, the watermill's guardians prepare to rouse this ancient giant from its long winter slumber. The lights are switched on, the alarm beeps as it's turned off, and one eyelid gently flickers as if to say, "Is it that time already?" The clink and clank as the



safety chain drops away arouses the beast even more "it really is spring!". Ears prick up as the water wheel is slowly turned by hand and all the parts checked for decay; his beating heart needs to throb at the correct beat for him to perform at peak efficiency.

Now comes the lowering of the running stone, softly kissing the bedstone in a gentle embrace ready to grind the corn. Next, the mill stones are tucked safely away in the tun, the great circular wooden casing hiding them from sight. Now the guardians massage and tinker away, checking the moving parts, inspecting the gears, greasing, oiling, adjusting machinery and pressure-washing away the grime and silt of the winter floods.

At last, the sluice gate is opened and the lifeblood of the beast flows into its heart. The water wheel turns slowly and cautiously at first, then with more vigour as the great animal is fully reanimated. Its greedy belly is filled with corn in great sackfuls which it grinds with its rotating gritstone teeth. The flour produced is so fine that you can put it in the palm of your hand and with one tiny puff, quietly blow it away on the wind. The mill has come back to life and the beast purrs with satisfaction!



The Mill is open on the Second Sunday of the month from April to October 2-5pm. Historic talks and milling demonstrations, Teas, Cakes and Trinkets, Family and dog friendly. **FREE ADMISSION**

William Forrest, Chairman, Cobham Mill Preservation Trust



SUMMER OF SCULPTURE RETURNS TO CLAREMONT LANDSCAPE GARDEN

Surrey Sculpture Society will again partner with the National Trust in Esher this summer, as it gets ready to install a second, exciting sculpture trail at Claremont Landscape Garden. Delighted by the public's response to last year's exhibition, this year the event will run from Saturday 14 June to Monday 14 July 2025.



Last year the exhibition saw over 90 works of art installed around the lake providing an opportunity for visitors to experience art against the elegant background of Claremont's Lake, Amphitheatre and pastoral landscape views. This year, alongside the exhibition, visitors will be able to join a guided tour of the artworks, a family trail and weekend clay workshops. Miranda Barber, the SSS Exhibition Manager commented: "We are delighted to be returning to the historic Claremont Landscape Garden this summer. We were thrilled to receive such a warm welcome from both venue and visitors alike last year. We hope that this year's trail of new and varied sculptural works will be equally well received."

Rob Bishop, Property Operations Manager at Claremont Landscape Garden, added: "We were absolutely delighted by the visitor response to the Sculpture Exhibition last year and are looking forward to seeing it return with a brand-new set of artworks by sculptors from around the country. We are also excited to expand on our visitor offer with additional activities running alongside the event."

Like last year, the exhibition will feature a mix of traditional, modern and innovative artworks created by the Society's army of talented sculptors – both emerging and professional artists. All works will be available for visitors to purchase. After exploring the accessible trail, visitors can round off their visit with some well-earned refreshment at the Gardener's Bothy café. The Garden is open daily between 10am and 5pm with last entry at 4pm, and entry to the sculpture trail is included within the overall ticket price. Free entry for National Trust Members.

For more information:

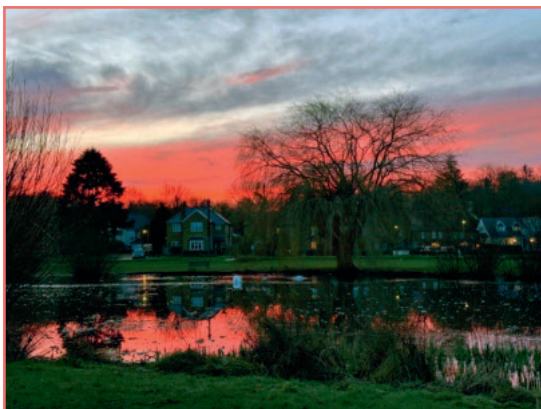
www.nationaltrust.org.uk/claremont and
www.surreysculpture.org.uk.

What's On—Spring/Summer 2025

There are a number of events to look forward to this year.

For more information go to:
www.nationaltrust.org.uk/claremont

Wanda Arden



This beautiful sunrise over the village green and pond was captured by Ashley Stockbridge

WEST END VILLAGE SHOW "For the Village, by the Village"

Preparations are now well underway for our annual Summer Show on **Saturday 23rd August - Save the Date!**

Following our first meeting of the year, we are pleased to announce the allocation of charitable donations from the proceeds of the 2024 Show. Despite a rainy day that saw attendance lower than expected, we are delighted to have made generous contributions to both our long-standing and new charity partners.

Princess Alice Hospice and Oxfam Esher charity shops each received their usual donations for their roles in collecting china for the popular Smash-a-Plate activity. Hearing Dogs for Deaf People also benefitted from a donation as part of our continued commitment to an animal charity in association with the Dog Show.



Above left: Caroline Richardson (full-time volunteer), Alastair Joel and Carol Marshall (Kennel Manager) with Tyla and Prince, ex-racing greyhounds both seeking forever homes, and right: Caroline Richardson with Tyla



A special highlight this year was the opportunity to donate a larger sum to Hershams Hounds, who we were proud to welcome at our AGM last year. Their commitment to providing shelter and rehoming retired racing greyhounds makes them an invaluable part of our community, and we are thrilled to support their work. We were grateful for their help in judging the Dog Show and we look forward to seeing them in the ring again this year.

In addition, Rentstart received a donation for their ongoing efforts in assisting local homeless or vulnerably housed individuals in Elmbridge. Their vital work in the community is something we are honoured to help support.

We are also delighted to contribute to the Village News, which is celebrating its 21st year. This publication continues to be an informative and engaging resource for us all and we are proud to support its continued success.

We want to extend a heartfelt thank you to everyone who supported our annual event. Your generosity helps make these donations possible and we look forward to welcoming you all again on Saturday 23rd August. Programmes will be distributed in June and look out for some exciting new entries this year. Let's make this year's Show the best one yet!

Julia Iveson, Publicity, West End Village Show Committee

STALLHOLDERS and ADVERTISERS wanted for the VILLAGE SHOW!

We are always happy to welcome new stallholders - be they artists, crafters, commercial or charity - looking to sell good quality or handcrafted wares or to promote their cause. We are also seeking advertisers for our programme which is distributed throughout the village and further afield via the Garsons Farm shop. All advertisements are also displayed on our website

www.westendflowershow.co.uk

which is currently being updated. If you know of anyone who might be interested in taking a stall or in advertising, please get in touch - contact details are on the current website.



ST GEORGE'S CHURCH WEST END



No doubt you are all as delighted as we are to welcome the longer day- light in the morning, light in the evening! The sun is shining more often and the swans are back on the pond. Spring bulbs are now flowering in our front garden. Thanks to lots of generous donations and gardening help – a large bed of spring bulbs, plants, flowers and shrubs with a “white theme” has been created on the right-hand side of the church. Thanks to all who have contributed and helped.

We had all our usual Christmas services, one of the highlights of which was our new Crib Service, run by Darren and Kath (our Children & Families Worker). It was called the “No Rehearsal Nativity” and whilst it kept to the traditional story – it was participative to include both children and adults. It was a real success with excellent feedback – so remember to put this in your diary for Christmas Eve this year! After all the Christmas flowers, tree and decorations were taken down we were back to our usual beautiful weekly flower arrangements, but the church will now be bare during Lent, with no flowers again until Easter Day. As usual we will have our “mini” Easter Gardens both inside and outside St George’s on Good Friday. Do look out for them.

Within a couple of days of Easter comes **St George’s Day** on 23rd April. This year it is a Wednesday, so we will be celebrating our patron saint at our service on **SUNDAY 27TH APRIL**. We will of course be decorating the fence around the church with St George’s bunting and flags. Please come and join us on this special day when our service will include some well-loved traditional hymns, including “Jerusalem” - come and sing your hearts out. We will then all head off to the Prince of Wales for coffee after the service.

Esher May Fair is on Saturday 17th May on the Green in Esher. Opposite, Christ Church will be open and welcoming everyone for tea/coffee/cakes, some lovely music, and a chance to meet our bellringers who will be in action.

The Church calendar moves us through Lent, Mothering Sunday, Palm Sunday and into Holy Week and Easter. Services at St George’s for this period are as follows:

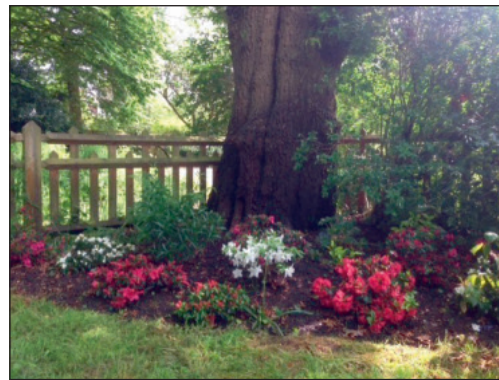
Sunday 30 th March	9am	MOTHERING SUNDAY
Sunday 13 th April	9am	PALM SUNDAY
Sunday 20 th April	9am	EASTER SUNDAY
Sunday 27 th April	9am	ST GEORGE’S DAY Celebration

Please do join us at as many or any of the services that you can. You are always very welcome.

St George’s Garden A lot of time, expense, care and hard work is spent on creating a peaceful haven to be enjoyed by you all. Unfortunately, circumstances have forced our Parochial Church Council (PCC) to put up the following notice:

You are most welcome to enjoy the peace and tranquillity of this lovely garden but please do not damage any existing planting, add plants or place a memorial plaque. For the avoidance of doubt, scattering or burial of ashes in the garden is strictly prohibited.
Thank you.
By order of the Esher Parochial Church Council
Dated 12th March 2025

However, do not let this spoil any moment that you would like to spend sitting in our garden. Please enjoy it.

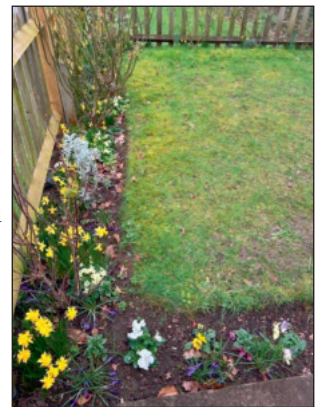


The pretty gardens at St George’s Church

For more information about all our services (at both churches) please do visit our website:

<http://www.esherparish.org.uk>

Here you can find everything you might want to know about the Parish of Esher including Music on The Green. We put topical notices on the fence outside the church – so please do stop and look to see what’s going on as you pass by.



Finally – thank you as always for your continued support and we wish you all a very Happy Easter.

Andrea Lindow and Bridget Williams

WINTERDOWN WI

Winterdown WI

Have you thought the WI isn't for you? Think again!

Why not give it a try? It's all about friendship fun and community.

We meet on the 1st Thursday of each month, at 7.45pm for 8pm start.

Venue: West End Village Hall
West End Lane
Esher
KT10 8LF

For more information contact infowinterdown@surreyfedwi.org.uk

The members of Winterdown WI have many interesting talks and outings on our calendar, and we would love you to join us. In April our talk is 'Life as a Norland Nanny' by a local Esher resident. I have heard some of her anecdotes and know it will be good.

Our outings include meeting for a pub lunch, going to see the tulips in Ripley, visiting Brookwood Cemetery and going on a boat trip. It is so good to be able to join in with these activities with new friends, so do come and meet us, you will be very welcome.

Marion Ford
President



‘THANK YOU’

The Village News team is enormously grateful to the Village Show committee for its very generous donation and continued support of the Village News. Your wonderful support enables us to continue to produce the newsletter helping to keep our readers fully informed of local events and news! Thank you!



THE ESHER PLANTERS' CLUB



The team of volunteers outside Levitas Clinic who kindly donated three Olive trees

The Esher Planters' Club is a group of volunteers, formed in March 2024, that works on behalf of Esher in Bloom (a committee of the Esher Chamber of Commerce). The Club aims to restore and maintain areas of planting in central Esher. The results of its work over the past few months are now easy for all to see. Many of the once sadly neglected areas are now thriving (although there is still more to do; the job will never be "finished"). The Club (generally) meets every Friday at 10 am in Hummings bar on the High Street. The sessions (weeding, watering planting etc.) are usually around a couple of hours. All are welcome to join, even if only to join us for a cup of coffee! More information can be found on the Esher in Bloom website (just put Esher in Bloom into your search engine).

Here is what two of our local Councillors have had to say about the Club:

As an Independent EBC councillor for Esher, I cannot over-praise the work of the volunteers of the Esher Planters' Club. The way they have already invigorated the High Street with vibrant planting, adding colour and local history to the dull black flower boxes has drawn favourable comments from all that see their hard work.

Simon Leifer

Elmbridge Councillor and Chair of Esher Residents Association

"Most Friday mornings in Esher High Street are a hive of activity as the Esher Planters Club set about weeding, digging and planting their way up and down the road. Esher's planters and flowerbeds had been terribly neglected for years, but the Planters Club has been relentless in its pursuit of dramatic improvement. They have done a terrific job when others would have just given up. They would also appreciate more public-spirited people joining them for a couple hours. You don't have to know anything about gardening, but it helps if you like coffee and a good chat. People and plants make a better place!"

Richard Williams

Elmbridge Councillor and former Mayor of Elmbridge

Below: A bowl of colourful Begonias and the Herb Garden



Volunteers enjoying a sunny morning,

We are always looking out for new members, not just for the manual labour, but also for what they add to our conversation and the ideas they bring with them.

If you would like to have a chat about what we do just get in touch with me,

Roger McCormick, at

rsmccormick@btinternet.com



B & B IN THE VILLAGE



Bed and Breakfast available. All rooms are double bedrooms, made up of king size, and super king beds. The super king can be divided into 2 single beds. All rooms have en-suites and also tea and coffee making facilities, mini fridge and water/juices provided.

Virgin cable TV and WIFI

A maximum of 2 adults and 3 children per room,

A warm welcome awaits you. For further information call

Edwina Halanen (West End Lane)
on 07721 091184

COUNCILLORS' CORNER

News from your local Elmbridge Ward councillors (EBC):



Residents sometimes ask about what their elected local councillors actually do and the hope is to keep you a bit more informed as, although we do have our own postal newsletter, it is published less frequently than Village News but we do have a web site (www.esher-residents.com). West End is part of the Esher Ward for EBC that also covers the east side of Hersham, Lower Green and Esher itself. Esher has 3 independent Residents' Association (ERA) councillors: Simon Waugh (Mayor 2022-23), Richard Williams (Mayor 2023-24) and Simon Leifer, ERA Chair. They receive no salary and only minimal allowances.

Moore Place Golf Course: Yes, it is Green Belt land but the new Government has declared open house on what it wants to redesignate as Grey Belt. The current position is that the developers applied to EBC planning asking for, 'a screening opinion as to whether an Environmental Impact Assessment is required for the proposed redevelopment of the site to provide up to 275 dwellings with associated landscaping, public open space, means of access, parking, drainage, utilities and infrastructure works'. The Council response was that yes, an Environmental Impact Assessment is required (application 2025/0357). Another application is to be expected.

Park Close Footpath Closure:

Still on the road, but no longer to nowhere, as the tenacious Doug Fryer and David Bramley are making progress...getting this expedited having convinced Surrey CC that there are valid health and safety issues that warrant investigation which should help to improve our position. Our MP Monica Harding is now involved too and is taking it up with the Planning Inspectorate. This is dragging on and it is a shame that residents are still unable to walk freely as has been done for generations along this public right of way.

And now for the fun part:

In January, along with a doughty handful of other EBC Councillors, I visited the Lower Green Thames Water site where I managed to get an answer to the question that residents have often asked me namely, "What causes that distinctive 'pong'?" Naturally, much depends upon the weather. When it's hot the separated out then skipped "rag waste" (non sewage) starts to smell. Also, if it becomes wet in the rain that can also cause an odour. Moving sewage itself does not smell, it can when it stops e.g. because of a blockage (from "rag waste") on the system when pumps stop working. One thing I did see is that there are six very large sludge storage tanks but only four of them are in use as the other two are corroded. Again this is the underinvestment by Thames Water that we keep reading about. I also met with Monica Harding, about this particular issue, and she has also had a separate meeting in Lower Green at a resident's home with other residents in attendance. She

offered to help and 'fortunately' she experienced the local pong herself and is already exerting further pressure for us and has written to the CEO of Thames Water (see the letter on the news section of our website:

www.esher-residents.com

Left: Simon Leifer having 'fun'



Simon Waugh, Simon Leifer & Richard Williams

NITROUS OXIDE FOUND!



Last week I came across a large open box of full nitrous oxide canisters - about twenty in all - that had been dumped at the top of Wolsey Road. I immediately rang the police who said they 'would put it on their system'. I hope they did send a car to pick them up as when I passed the area where I had found them in the afternoon, they had gone. Just hope it was the police!

"No Laughing Matter"

I have a large hoard of laughing gas
- more than my needs require, I guess.
My Council says they are 'Hazardous Waste',
And to dispose of them with utmost haste -
But NOT in my bin - as they could explode!
I'm directed to take them MYSELF by road
To a special depot for dangerous stuff -
Twenty miles from here - so I've had enough:-
I decided to sell them at a special price,
To discerning inhalers who'll take my advice
To buy three for two - a deal like no other
And I promise to post them under plain cover.....
It's a nice little earner and helps pay my bills
And makes users happy - much better than pills!
The postage is huge but my buyers comply,
As they know the contents will give them a high!
My sales are soaring and fame has spread
I've now reduced my offer to one per head
As my store is rapidly running too low -
I can't let down my clients and see them go...
I've bought a drone with my ill gotten gains
To find discarded canisters in local Surrey lanes.
I discovered so many and overfilled my boot,
Driving gingerly home with my lucrative loot...
Everything was fine as far as I could tell...
Until the Rozzers came and loudly rang my bell....
I didn't expect to spend Christmas in jail...
- they don't even allow the smallest inhale
But my fellow inmates have much up their sleeves,
And now I make hooch with great expertise!
So when I get out I'll extend my client base,
And insure against explosions - just in case!!



Wendy Tanqueray



VILLAGE NEWS WEST END

Please make a diary note:

Summer: Friday 20th June by 1pm

Autumn: Friday 5th September by 1pm

Winter: Friday 28th November by 1pm

Please contact Angela Stockbridge Email:
angelastockbridge1115@gmail.com 07817 498531 or 01372 460703

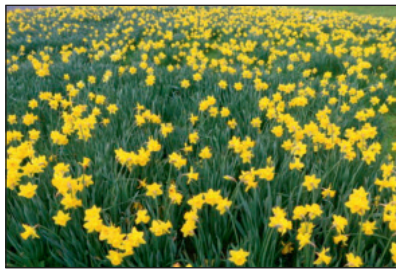
The Village News is supported by local organisations including: the West End Village Club, West End Motor Club, The West End Village Show Committee, Garsons, Winterdown WI, the late Richard Gale, West End Village Hall Committee, The former West End Residents' Association, Advertisers and personal donations. The newsletter is printed by Impress Print Services of Hersham and Garsons. Please note the newsletter can also be found on the Garsons website on www.garsons/Community Page, www.AFC Westend website and West End Facebook Page.
We thank you all for your continued support.

THE MARIE CURIE "FIELDS OF HOPE"



Remembering the late Derek Denyer (left), Mayor of Elmbridge from 1998/99 who intended to turn our little dreary place into a happy flowering one! "Marie Curie" was his chosen charity and with the help of their "daffodil" emblem fulfilled his wish. 70,000 daffodils were planted in Autumn 1998 and the most magnificent show was to be admired in Spring 1999.

All roundabouts were sponsored by companies and the "Fields of Hope" appeared everywhere. Garsons were very generous too. It was splendid and the lovely thing was that not only the big companies would shine, but so many bulbs were bought with the widow's mite. Over the years many local societies have added and filled many corners, which is absolutely wonderful.



Fields of Hope

Remember the month of March Charity "Marie Curie"

Olga Denyer

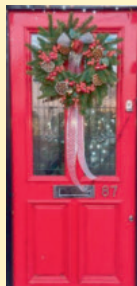
VILLAGE CHRISTMAS DECORATIONS

Following my message in the Village News encouraging locals to decorate their houses at Christmas, I would like to thank everyone who made a spectacular effort. We are so lucky to have such a pretty place in which to live. Seeing so many houses decorated made what can be a gloomy time of the year colourful and jolly.

One of the houses had a note left congratulating them on being the best decorated, well done!

Let's make it even better next year, maybe encourage Garsons to erect a Christmas tree somewhere in the village wouldn't that be the icing on the cake.

Alice Austin



THE PRINCE OF WALES POTHOLES!

At last! We were delighted to see all the action on the morning of Thursday 13th March when a team of workers arrived with huge tarmacking machinery to repair the potholes in front of the Prince of Wales!



ESHER FRENCH CIRCLE

Great men called Louis: a coincidence?

Germaine Jones's talk to Esher French Circle on 15 January briefly mentioned the many French kings (more than 20) with the name but concentrated more on other men called Louis who have made a perhaps more memorable impact on the world. Including:

Louis Blériot, aviator - **Louis Braille**, educator and inventor - **Louis Pasteur**, chemist and microbiologist - **Louis Lumière** – cinematography.



Louis Blériot, aviator

Which Louis was Louisiana named after?

Esher French Circle's talk on 19 February was by Isabelle Schloesing. Her talk (in French) was about the period during which the part of America that now includes Louisiana was under French rule. It was King Louis XIV who initially sent French architects and engineers to create a 'Petit Paris', but it was Napoleon who later sold the land. The French influence remains in the cuisine and culture of New Orleans and the State of Louisiana.



When Louisiana was French...

Napoleon's march on Russia: a campaign too far

On 19 March, local resident Annie Kean recounted the terrible losses that Napoleon's 'Grande Armée' suffered when they marched on Moscow. Of the 480,000 soldiers who crossed the river Nemen in June 1812, only around 72,000 returned in December of the same year.



Napoléon's Grande Armée suffered catastrophic losses in Russia in 1812

Esher French Circle's programme of talks in French, spring 2025:

16 April 2025 Voyage à Madagascar by Brigitte Whiteing

21 May 2025 Les métiers disparus by Danielle John

18 June 2025 Ernest Hébert, French painter, by Thierry Viennois

Esher French Circle offers monthly talks – in French – by native or fluent French speakers, for anybody interested in keeping up or improving their French, in a relaxed and convivial setting. The talks take place in West End Village Hall, Esher.

The meetings are on the third Wednesday of most months and the doors open at 7pm. There is ample opportunity to mingle and chat over a cup of tea or coffee and biscuits before the main talk starts at 7.30pm. Esher French Circle warmly welcomes anybody with an interest in France and French life.

More information is available on the club's website:

www.cerclefrancais-esher.uk

or from the club's secretary: Brigitte Tiller E brigitte@ptiller.com M 07896 233728

or Peter Prowse on M 07973 213039

Email: peter.c.prowse@gmail.com

Peter Prowse

THE WEST END SPORTS & SOCIAL CLUB



PLEASE VISIT OUR
WEBSITE FOR THE
CALENDAR OF EVENTS
www.WESSC.org

WEST END SPORTS & SOCIAL CLUB

SPECIAL



WEST END GOLF SOCIETY



Anyone wishing to join the
WEGS can call
Dave Morgan on
07956 221566

NEWS FROM THE BAR



Shown here enjoying a visit to the Village Club are popular bar members Jake Cooper and Matt O'Neil. Both are in their final year at Newcastle University and we are looking forward to seeing a lot more of them and their pals when they graduate in the Summer of 2025.

Away the lads!

Richard Jenkins, Bar Manager

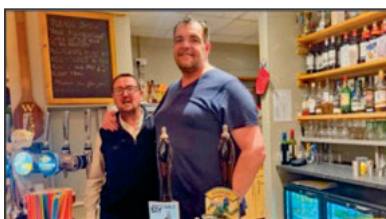
THE PRESIDENT'S PARTY



Club revellers enjoyed an evening of music to the sounds of our legendary local musicians. A huge 'thank you' to Paul Gibson (guitar and vocals), Eugene McGuigan (lead guitar), Howard Hope (guitar and vocals) and singers Abi Palmer, Jackie Batchelor and Geoff Bull.

Thank you also to the Club committee, Aidan Baker, David Parcell and Lee Dellar for supporting the event, and to Ruth Loveridge for decorating the Christmas tree and making the clubhouse look very festive for the occasion.

Last but not least to the bar staff, Richard and Dan, who did a sterling job keeping the members' glasses topped up to complement the buffet, and to all the members who joined in the fun ensuring the evening was a success!



Angela Stockbridge

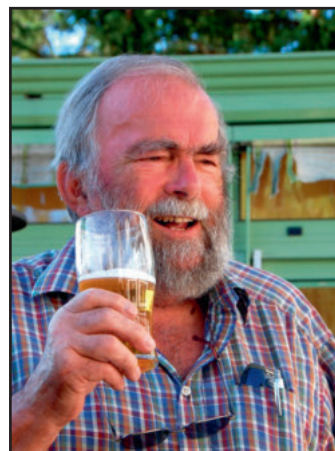


WEST END MOTOR CLUB

You will have read elsewhere that we have lost our dear friend David Rolfe, motoring enthusiast extraordinaire. David had owned more than 40 different cars over the years, from humble Austin 7s to the mighty vintage Bentleys which epitomised his larger than life style.

David, with the late Charles Pocklington and others, founded the West End Motor Club in 2005. Launched at the Summer Show they were a 'band of brothers' meeting at the then new Clubhouse. We still function informally without a committee or membership fees, welcoming classic car owners and enthusiasts alike.

We have since then organised 15 annual Pocklington Classic Rallies fundraising for Macmillan in memory of Charles. David arranged the collection of more than £25,000 by means of buckets and blackmail. In all 51 different rallyists took part, averaging 12 to 15 per rally. He was our only member attending all of them, using 7 different cars to earn top place on our roll of honour.



Cheers David!.....Cheers John!

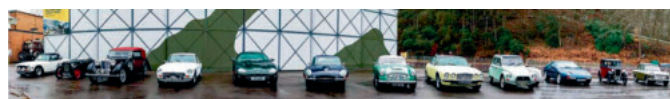
We will remember David as jovial and enthusiastic, always ready to assist organising our rallies by finding suitable hostelry (real ale and secure parking) and helping with car problems en route.

We will also remember John Cooper, an enthusiastic recent member in 2019 with two good classic cars, who died in January on the same day as David.

This year will be our 20th anniversary so some celebration needs to be organised. We're at the Club most Thursday evenings to welcome classic car owners and enthusiasts alike to join for a drink, car chat and plan future activities.

Text: Ken Berry & Roger Brown

Photo: Eric Strange



A TRIBUTE TO

DAVID JOHN ROLFE 1939—2025



A larger –than-life, straight talking, patriotic, proud Yorkshireman, who was known for his generosity of spirit and keen Northern sense of humour.

Born on 2 April 1939 in Sheffield, David was educated at King Edward VII School. In 1957 David started studying Architecture and Design at Sheffield University. In the first term of his course there was a production of ‘Macbeth’ by the Dramatic Society, and he was rather taken with the “Third Witch”, a vision with a green face and purple hair. In 1963 he married her and they settled in Surrey, where his first ‘proper job’ was at the War Office in Chessington.

In 1968 he co-founded ‘Rolfe-Judd’ laying the foundations for what was to become a leading architectural and planning practice. Those who worked with him remember his charismatic personality, sharp wit and unwavering enthusiasm for design, which ensured that he left his mark on many buildings in London. At this time, he also became a Freeman of the City of London and was involved in founding the Livery Company, the Worshipful Company of Chartered Architects in 1985. This gave him the right to drive his sheep over London Bridge, (an honour which, regrettably, he was never able to perform)!

His enduring passion for motoring and vintage cars began in 1973 with the purchase of his beloved 4½ Litre 1927 Bentley. For the next almost 50 years, together with Pat and his daughters Melanie, Cressida and Holly-Anne, he enjoyed many wonderful events in the UK and across the globe.

As a younger man he thoroughly enjoyed leading a posse of like-minded enthusiasts to the 24-hour Race at Le Mans - later his loyalty to the Bentley Drivers Club became paramount - he was a Director between 2002-2008 and then Hon. Archivist. However, what he really loved doing was sharing his knowledge and helping other members when they had problems and he would always persevere until it was solved - giving up was never an option! Mechanical miracles happened in the garage of Albany Lodge..

David, Pat and their daughters moved to Littlecroft on the Portsmouth Road in 1970 and then to Albany Lodge (which had been built for Queen Victoria’s doctor) in West End in 1977. The girls attended Claremont School, and the family has always had a strong connection with West End having spent many happy years living in the village and supporting local events, and David’s contribution to the Flower Show and the Village Club especially, was memorable.

David was a great man who will be sorely missed by so many who loved and respected him. He passed away peacefully on January 27th, at home, surrounded by his family, as was his wish.

Patricia Rolfe & Family Photo: ‘David tinkering in his garage’ by Robin Crane



AFC WESTEND

Hi everyone,
We hope that this finds you are all well and surviving the stresses and strains of our current climate! We really hope that this latest update from the Westend football section will somewhat brighten up your day and give you an insight into how our Sunday side are faring in their respective league and various cup competitions.

AFC WESTEND SUNDAY – 2025

The Sunday team under the managership of George Nixey and Josh Hughes are so far having a great season, at the time of writing they have played 12 league games, won 9 of them, drawn 2 games and have only lost 1 game.

Currently the team are placed in 2nd position in Division 2 of the Leatherhead & District Sunday Football League, and they are level on games with the top team, who are 4 points ahead of us, so all to play for. We still have to play them again, which, if we win that game, will certainly make things interesting on the final run in.

The team also progressed to the ¼ finals of the Surrey County Cup, which is a massive achievement as we’ve never got that far in what is seen as one the most challenging of cups, with teams competing from all over the county of Surrey. We unfortunately, lost that game by 2-0 against the team that are currently top of our league, so no disgrace really.

Last Sunday, the 9th March, we played against a team in the Senior Challenge Cup that are two divisions above us, for most of the game we more than held our own against them and gave them a good game. However, we finally lost the game by the narrowest of margins in the last minute of normal time when they scored to make it 3-2. We were so unlucky on the day, and at one point were winning 2-1 with only 12 minutes of the match to go, but we just couldn’t keep the momentum going.

We are back to league action this coming weekend the 16th March and it’s a must win league game for us as we need to keep piling on the pressure on the top team to hopefully narrow the gap on them, so watch this space as they say.

Our home pitch at Westend has become somewhat of a fortress this season, and so far, we have won all our previous home games, although as you’ve probably noticed the pitch has been somewhat flooded since the New Year and we have lost a few of our home games and have had to find alternative pitches to get the games played. But hopefully, as the weather has been a bit kinder recently to us of late, we may be able to get back playing on the pitch we love to play on very soon.

So, there we are, a very quick update on your local football club news. Let’s hope that our team at AFC WESTEND can now continue with their rich vein of form, and will hopefully, bring some much needed success in the latter half of the season to our wonderful village.

Cheers all,

Keith – Club Secretary

**For more club news, please visit our website on
www.afcwestend.co.uk**

		P	W	D	L	GD	PTS
1	Off the Grid	12	11	0	1	33	33
2	AFC Westend Sunday	13	9	2	2	32	29
3	Byfleet Village Men’s	16	8	0	8	2	24
4	Southwest XI 1st	13	7	1	5	14	22
5	Surbiton Town	14	6	2	6	5	20
6	Chessington Sports United FC	15	5	3	7	-21	18
7	Hersham Jaguars	11	4	2	5	-5	14
8	Sutton Knights 1st	15	4	0	11	-28	12
9	Alexandra United Athletics	15	2	2	11	-32	8

WEST END ESHER CRICKET CLUB

CELEBRATING 150 YEARS

Welcomes junior members for the 2025 season

U5 – U14 Boys and Girls

Season kick off - Friday 2nd May 2025, 5.15pm onwards

2025 SEASON INCLUDES:

- Friday evening training
- Matches throughout
- Family membership to West End Sports and Social Club

NOW OPEN FOR REGISTRATION

FURTHER INFORMATION

Email Ruth Lovering juniorchairman@weecc.co.uk

Membership registration via TEAMO at weecc.co.uk

The Pavilion, West End Lane, Esher, KT10 8LF

[@WestendEsherCC](https://www.facebook.com/WestendEsherCC)

'FRIENDS' OF THE VILLAGE NEWS

We would like to thank the following 'Friends' for their generous donations:

2024

Kathy & Richard Goode
Rob Lowe
A J and B Maddows
Malcolm & Kay Parsons
F J Reader
Derek Richardson
J & J Stadius
Peter and Pat Thompson
Simon & Veronica Whittall

2025

Peter & Naomi Bedford
A J and B Maddows
Malcolm & Kay Parsons
F J Reader
Derek Richardson
J & J Stadius
Angela Stockbridge
and donors who wish to remain anonymous.

Wheatley & Sons Limited
Established 1850

Telephone: 020 8979 5762

BRIDGE ROAD, EAST MOLESEY, and HIGH STREET, ESHER.

WHEATLEY & SONS,
(Successors to J. Wheatley & Sons, Ltd.)

Builders, Contractors, & House Decorators.

GAS, HOT WATER and SANITARY ENGINEERS, PLUMBERS, GLAZIERS, and BELL HANGERS.

Jobbing Work of every description with Bricklayers, Plasterers, Carpenters, Cabinet Makers, Painters, Paperhangers, Glaziers, Gilders, Plumbers, Gas and Bellfitters, Tinmen, Smiths, &c.

Carpets taken up, Beaters and Relaid. Stoves and Ranges Supplied and Set. Boilers Cleaned. Kitchens Utensils Retinned.

HOUSE DRAINAGE & VENTILATION A SPECIALITY. DRAIN TESTS AND REPORTS.

PLANS prepared and advice given upon all matters connected with New Buildings, Additions, Alterations and Repairs.

FUNERALS FURNISHED in best style and conducted to any part of the country. Cremations arranged. Monuments, Brasses, Memorial Windows &c.

HOUSE & ESTATE AGENTS. FIRE & LIFE ASSURANCE. RENTS COLLECTED. VALUATIONS FOR ALL PURPOSES.

NO JOB TOO SMALL

Telephone 020 8979 5762

Fax: 020 8941 7388

Email: wheatley_sons@btconnect.com

THE VILLAGE NEWS TEAM

Sheila Apicella
Alice Austin
Aidan Baker
Peter & Naomi Bedford
Lynn Bezant
David Bramley
Tricia Currie
Don Elms
David Ford
Doug & Sue Fryer
Di Gibson
Andrea Lindow
Rob Lowe
Roger Marsden
Rosie Master
Margaret Mazzina
Donald Mungall
Avril Poat
Nik & Judy Wilkinson
Bridget Williams

Treasurer: Derek Richardson
Auditor: Peter Heath
Editor: Angela Stockbridge

SURREY FIRE & RESCUE SERVICE

Should you have any concerns or need further advice
Visit:
www.surreycc.gov.uk/safeandwell

Call free on 0800 085 0767
Text to 07971 691898 with your name, contact number, post code, your primary concern, such as smoke alarms, a disability or safety concern.
RING 999
IN CASE OF EMERGENCY

HOME COOKING
by Elizabeth
EST. 1986

Bespoke Catering Of Formal & Informal Events

WEDDINGS
MEMORIALS
CELEBRATION PARTIES
CHRISTENINGS
CORPORATE EVENTS
HOUSE WARMING PARTIES
THEMED PARTIES
SMALL PRIVATE FUNCTIONS
DISHES AND PLATTERS

ELIZABETH TRELIVING

HOME COOKING BY ELIZABETH
The Showroom 1 Church Road Great Bookham KT23 3PD

T: 01372 453206 M: 07712 760175 E: ejtreliving@aol.com
Or visit our website www.homecookingdirect.co.uk

The delicious and colourful buffet lunch provided by Home Cooking by Elizabeth, held in the Village Hall for the late David Rolfe following his Memorial Service in St. George's Church on the 7th March.

Photos: Elizabeth Treliving





VILLAGE NEWS

WEST END

Volume 22 Issue 1
SPRING 2025
21ST EDITION
SPECIAL SUPPLEMENT

WEST END ESHER CC are celebrating 150 years of Cricket on the Green!



Mr & Mrs Oakley and team—1897

Dear Westenders,
 That's right, your club has been chasing a small leather ball around the village green for one hundred and fifty years, which actually makes us one of the longest established clubs in the area. Naturally we want to embrace and celebrate this milestone in style and we would like to invite all of you to join us in doing so.

First thing to tell you is that the annual village party that we organise is changing date and will be on 21st June – Midsummer's Day. Our 1st XI have a home game that day against Merrow CC so come down and support them in the afternoon, then we will have a live band, DJ food and drinks in a marquee in the evening. We have moved the date for this year as it is a special year for us and we want everyone involved in the club and around the village to be able to attend. More details and pricing to be announced shortly.

Now on to cricket, which is what it is all about. To mark our anniversary we are going on tour to Croatia over the last weekend in April – a full report (on the cricket at least!!!) will be posted to our website www.weecc.co.uk and in the next edition of the news. We are welcoming more new players to the club this season, including our new head coach Will Lucas who will be running training for the seniors on Thursday evenings and the older juniors on our usual Friday nights. Training will start out on the green as soon as conditions allow – work has already begun to bring the square and outfield up to readiness for the season.

Our first full evening of training will be on Thursday 1st May when we are having an introduction to cricket evening aimed at girls only. Women's cricket has rightly become much more prominent in recent years and we are very keen to re-establish the strength of our girls section. If your daughter would like to try out our brilliant sport then please do bring her down to the green to meet the team and she'd be welcome to bring friends too. No experience of cricket is necessary!

Friday 2nd May will see our first full Junior evening and this is open to both boys and girls. Our younger age groups will train between 5.15 and 6.15 with the older players training from 6.15 to 7.45. As ever the sports and social club bar will be buzzing and our new BBQ will be doing a roaring trade. We now have very limited spaces available with so many new and returning colts so if

you'd like your child to give it a go please contact Ruth Lovering – Juniorchairman@weecc.co.uk or you can hit up the website.

The senior action starts on 3rd May with a friendly game against Thames Ditton and the season proper starts the following weekend. As ever we will have twenty20 games in the summer and our over 40's side will continue to play their T20 matches too. Our adult Sunday side will play slightly fewer fixtures this year to allow for the larger number of junior matches we need to host as our numbers have increased.

New members at any level are ALWAYS welcome so if you'd like to dust off the cricket whites this year please do get in touch via the website or you can email me directly –

chairman@weecc.co.uk

Finally we have a number of sponsorship opportunities available this year so if you would like to do something to help grassroots cricket in your local area you know who to contact. I look forward to seeing you over the course of the summer – the players really appreciate your support on match days and it promises to be a very good season ahead.

Chris Hambleton, Chairman

WEST END COMMON NEWS

Elmbridge's Countryside Team maintains the common for wildlife and public amenity. It was a stormy year with many trees blown down, taking up a lot of our time to clear from paths and roads.

In the last year, the steps and boardwalks on the River Mole below the Ledges have been refurbished, and habitat work has taken place on some pond margins and on the old rubbish dump area at the south end of the rifle range path. Our weekly Tuesday and Thursday volunteer groups have really taken off in the last 2 years and have achieved so much around our sites. Come and join us! Email countryside@elmbridge.gov.uk.

West End Common Drainage and the Flood of 1st/2nd December 2024

As part of my role as Countryside Estates Officer, I have been involved in maintenance of drains and ditches around the commons for many years. Since 2010, I have also been the de facto Drainage Officer for the Borough, dealing with water-course maintenance contracts and liaising with Surrey CC as the Lead Flood Authority and the Environment Agency on strategic catchment matters. West End Common as part of the flood plain has always been a particular focus, starting with researching the drainage with resident David Rolfe back in the 1990s. My sketch map reproduced here shows how much water passes through the Common, and discharges at two points, under Garson Farm to the Mole in the west, and the pipe from Garson Road to the 'Brisson Close' ditch through the Recreation ground to the River Mole in the north. With climate change, heavier and more sustained rain events are more likely and these pipes and ditches with their limited

/continued

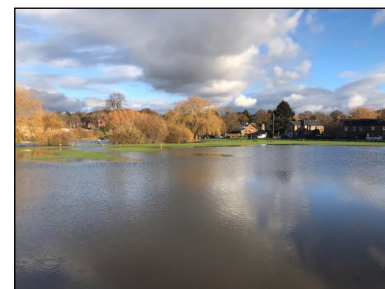
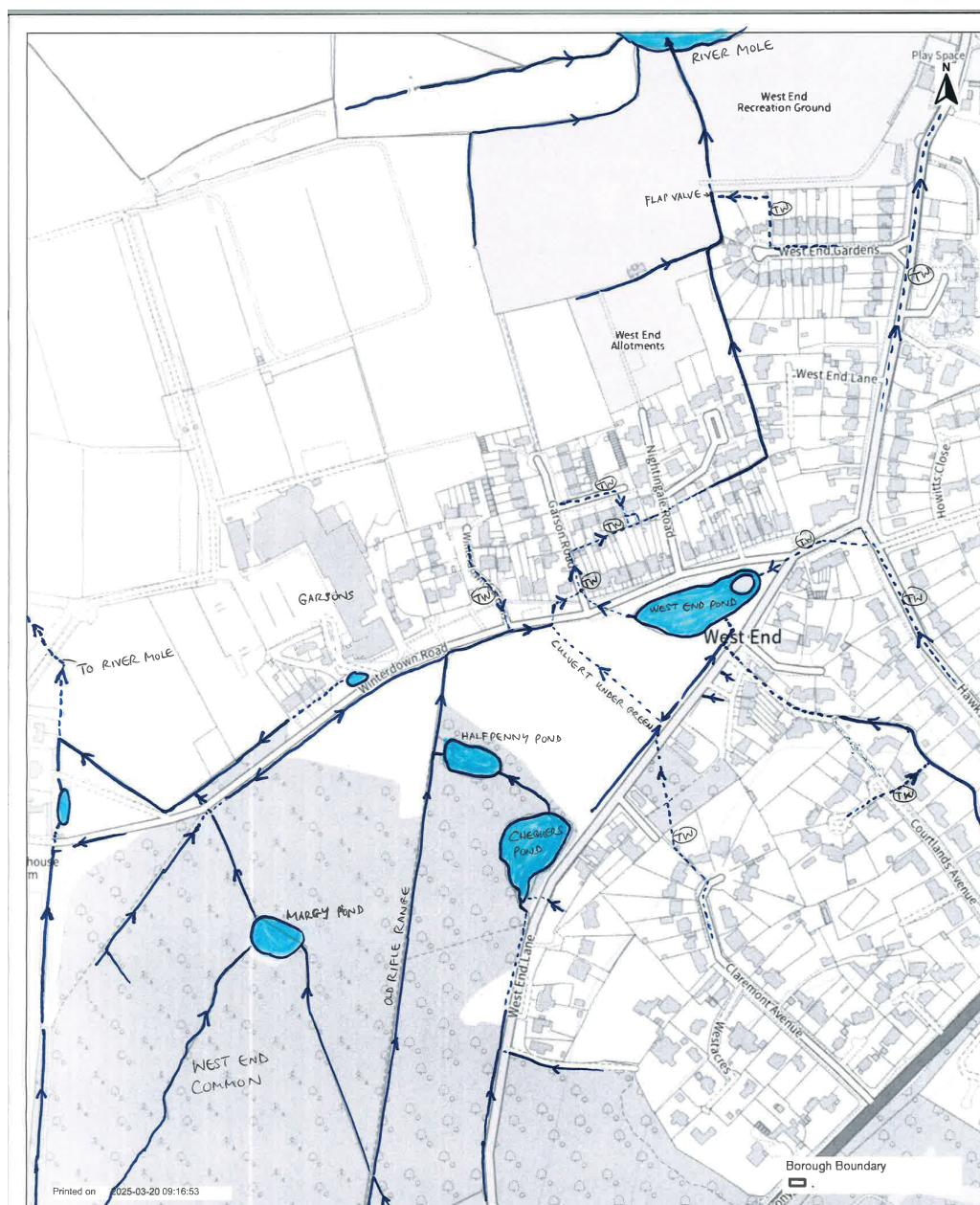
capacity are going to be put under greater pressure and their correct maintenance becomes more important. Property owners adjacent to a watercourse have a duty to keep it clear under riparian law. I have flagged this area up with Surrey CC as a potential risk worthy of further research to see if flood resilience can be improved in the future. There is limited scope in holding back water on the common by blocking ditches etc. as this would seriously affect access.

So when the water main on the Portsmouth Road burst on the 1st December, all of the discharge ended up on West End Common via Hawkshill Way and flooded the green to the highest level I have seen in all my years. The photos taken on the 2nd show the depth of water still on the green 24 hours later. Luckily it wasn't raining heavily at the time as this would have made the situation far worse. I reported this flood to Surrey CC as further evidence of my concerns about the capacity of the ageing infrastructure.

And that is where we are today. In other news, I have made the decision to retire from my role this summer after 33 years at EBC, first as Senior Ranger, then Countryside Estates Officer. I have got to know and work with so many West End Residents over the years and it's always been a special place and community. Thank you for all your help and encouragement. I'll still be around in the near future, just spending more time enjoying the commons that have been such a happy working place for me maintaining the habitats and shaping the landscape for all to enjoy. Thank you.

Dave Page MCIEEM, MSc Env. Man. Countryside Estates Officer Elmbridge BC dpage@elmbridge.gov.uk

Dave's images of the flooded green following the burst water main.



West End Common and Surrounds Drainage Map

Scale 1:3000