



Volume 21 Issue 1
SPRING EDITION 2024



At the end of 2023 through to this year we have seen a dramatic rise in catapult attacks on wildlife. It seems at the moment that we are being called out to swans and other water-birds being injured or killed by these mindless attacks almost every day. Even our colleagues at other rescues up and down the country are seeing the same things.

At the beginning of the year, one of our rescuers rushed out to deal with such an incident, one of a breeding pair of swans had been killed and the other seriously injured. Whilst our rescuer was saving a life the front of his van was smashed and two pigeons that had been killed were left by his van just goes to show that these people are Violent.

Thankfully the Surviving swan is doing well and has made it to outside ponds, and should be able to live a fairly normal life. We are seeing a wide range of injuries from just minor wounds, to loss of eyes. We are able to provide a long term home for those that suffer life changing injuries

As you can imagine all of us here at The Sanctuary are finding it harder and harder each day, we spend our days getting these lovely birds out of trouble and back to fighting fit only for some one to come along and take the very life we saved.

"The only thing necessary for evil to triumph in the world is that good men do nothing". - Edmund Burke

link to petition -<https://petition.parliament.uk/petitions/653116>

Gemma Nelson, Fundraising

Please help to protect our beautiful village swans.

Hopefully the pair on the pond will start nesting soon. There have been a number of attacks on our swans over the years, sadly by foxes, or dogs who were not kept on a leash and cars travelling too fast along West End Lane and Winterdown Road.

Please keep dogs on leads around the green and ponds and drive carefully through the village.



This beautiful night time image of the swans on West End Pond was taken by Carl Michael Walker

A NEW LOOK FOR THE PRINCE OF WALES

BEFORE



AFTER



With the renovation work completed the Prince of Wales has a stunning modern look both externally and internally. It certainly has taken on a whole new perspective with comfortable seating alcoves, superb bar, an amazing orangery, outside bar and landscaped gardens. Now under new management we welcome all the staff to this unique and friendly village.

Photos: Angela Stockbridge

REFLECTIONS ON THE GREEN

The flooded football pitch by Ann Tennant



FC Pilates

Welcome to FC Pilates – Where Your Wellness Journey Begins!

Join Us Every Monday for a Pilates Experience Like No Other!

Discover the Remarkable Benefits of Pilates:

Beginner's Bliss at 10AM:
Perfect for Injury Recovery
Prevent Injuries with Core Strengthening
Combat Arthritis and Boost Mobility
Sculpt Your Body and Increase Strength

All Levels Invited at 12 Noon:
Elevate Your Fitness Game
Continue Your Healing Journey
Stay Agile and Pain-Free
Achieve Peak Strength and Flexibility

Have Questions or Uncertain If Pilates Is Right for You?
FC Pilates is here to help! I'm always happy to chat with anyone who has questions or needs guidance on their fitness journey. Contact me on 07879447852 for a friendly chat.

Limited Spots Available - Only 8 Spots in Each Class!
Secure Your Spot for Just £10 - Pay as You Go!

To Book Your Place, Email: admin@fcpilates.co.uk

Location: Home Studio on West End Lane

www.facebook.com/fcpilatesonline

WEST END VILLAGE SHOW Saturday 24th August 2024



It is a pleasure to be writing my first Village newsletter article as your newly elected Chairman of the West End Village Show. I have been involved with the show for several years and it is nice to be able to give something back to the community in which I work. I have big shoes to fill as I take over from Steve Kelly, however, with a committee of dedicated and hard-

working individuals, this makes the task easier. I would like to thank Steve Kelly for his hard work as Chairman over the many years, and for his continued support of the show.

We would always welcome new people to join us, whether it's helping organise the show in advance, or helping on the Friday afternoon and the Saturday of the show. My contact details are below, should anyone be interested. At our first Committee meeting of the year, we agreed a strapline which will be added under the title of the show 'For the Village, by the Village' – this encompasses our community and the togetherness that the show brings to West End.

Our first meeting also saw us confirm our charitable donations from the 2023 show proceeds. We have made our usual donations to the Princess Alice Hospice, Oxfam Esher, for their part in collecting china for the always popular Smash a Plate, and to the Hearing Dogs for our support of an animal charity in association with the Dog Show.

I am pleased that we can continue to support the Village News and donate to the Sports and Social Club. We have also purchased a new battery for the defib, located on the side of the village hall – the existing one is due to expire. Two larger donations have been made to, Elmbridge CAN – this is a community, volunteer-powered, non-political charity based in Elmbridge, set up to welcome refugees within the community, working to achieve the settlement of non-refugees into the Borough.



WEST END VILLAGE NEWS CELEBRATING 20 YEARS THIS YEAR BECOME A 'FRIEND' AND SUPPORT YOUR LOCAL NEWSLETTER

In order to keep the Village News viable, and to assist with the ever increasing costs, we invite our readers either to renew their 'Friendship' or to become a new 'Friend' of the Village News.

This would involve making an annual donation of £50.00 to commence whenever feasible, with the opportunity of having your name published in a list of 'Friends of the Village News', or to remain anonymous. Alternatively, contributions in units of £10.00 would also be very welcome.

We are very privileged to be able to advertise on Garsons website Community Page, the AFC Westend website and Facebook's West End Community Page, which is of great benefit to all those who advertise in the newsletter, as well as giving an insight into our unique village life. The Bank details are:

Account name: Village News (West End)

Account no. 56514794 Sort Code: 60-08-04

If you have any queries please contact Derek Richardson at derek.richardson@garsons.co.uk

The Second donation is to Rentstart – they are a charity helping local people in Elmbridge who are homeless or vulnerably housed. Each year they house and support around 150 people and help them move on with their lives.

These donations have only been possible by the generosity of those supporting the Village show. I would like to thank everyone for their continued support of our annual community event. Preparations are well under way for this year's Village Show; **Save the Date - Saturday 24th August 2024**, I look forward to seeing you there!

Alastair Joel—Chairman alastairjoel@btinternet.com

SURREY ARTISTS OPEN STUDIO



Four artists who regularly exhibited with Ros Moysen at Rose Cottage will be getting together for Surrey Artists Open Studios and exhibiting at One The Garth, Cobham KT11 2DZ on Fridays, Saturdays and Sundays between 1st and 23rd June.

Beautifully turned wood meets intriguing sculptured figures, colourful handmade jewelry and creative textile art. Roger Marsden's creative woodturning is both artistic and useful; Janet Stanley's sculptures include a range of small bronzed figures and groups; Tricia Baldwin's jewelry features colourful semi-precious stones; and Wendy Hale has an extensive range of creatively conceived knitted, crocheted, stitched and embroidered textile art.

Roger Marsden

IMPORTANT PLEASE READ.....

Call 999 for Emergencies only.

Call 0800 555111 for Crimestoppers.

Call 101 - Surrey Police for General Enquiries and non-urgent matters.

This number will also transfer you to Esher Police Station, which is open from 09.00-17.00 hours Monday to Friday.

Sgt 3528 Nick Reynolds is Sgt for Esher and Claygate PC 3435 Ian Hallam is the local Esher Officer

Officers can be contacted by dialling 101 or email:

Officers can be contacted by dialling 101 or email: **Please note: the email address has changed for the Elmbridge Policing Team to elmbridge@surrey-police.uk**

Contact for Neighbourhood Watch, is now :

<http://elmbridgehw.ourwatch.org.uk/>

Please report suspicious incidents via 101, or in an emergency 999.

You can also contact Surrey Police online:

<https://www.surrey.police.uk/contact/af/contact-us/>

Or Facebook [https://www.facebook.com/Surrey Police & X](https://www.facebook.com/SurreyPolice&X) (formerly Twitter)

IN THE KNOW—Surrey & Sussex

Please report suspicious incidents via 101, or in an emergency 999.

- ◆ Keep all windows securely locked at all times and once again please remove all valuable items from cars when parked. Car thefts continue in the area.
- ◆ Report suspicious emails to SERS (Suspicious Email Reporting Service). Mobile phone providers also offer a service which allows customers to report suspicious text messages by forwarding them to 7726.
- ◆ Bicycle thefts reports continue—please keep yours safely stored and securely padlocked.
- ◆ Over 6,000 reports of TV Licence Phishing Scam emails were received between 1st and 15th January, claiming to be from TV licensing. Please do not give them your bank details.



MEMORIES OF NELL (NELLIE) GRACE KENDRICK

27th November 1930 - 27th November, 2023



Nell in Monet's Garden, Giverny in 1999

Nellie grew up in Esher. She attended Tiffin Girls School and at the age of 13 was giving piano recitals locally, performing both solos and duets. Her artistic talents at school became apparent through her natural history drawings. She was a Girl Guide and enjoyed trips to the Scottish Highlands.

On leaving school she joined the Ministry as a lab assistant which came with a University day release course in bio-chemistry. Tragically her father died suddenly and her further education was put on hold while she supported her mother and the household. Nellie enjoyed dancing and became an accomplished medal winning ball room dancer. She joined the Choral Society and sang with it for 40 years touring Europe with the choir. She converted to the Catholic faith and joined a pilgrimage to the Vatican making friends across Europe and the Middle East.

Nell and John married in March 1957 and moved to West End in 1959. Their children, Nick, Jon and Helen were raised in West End. She loved nature and when a mouse occasionally crossed the room she fed it with cream crackers each night until the mouse got bored with crackers and started on other things so had to be repatriated, only to find its way in again and again until she discovered there were a lot of mice so she gently repatriated them all!

Nell and John enjoyed gardening and wildlife which inspired her to paint in watercolour and she travelled to the South of France to paint on several occasions. She enjoyed cooking and making Oatcakes which were always a family favourite. Nell was a member of Winterdown WI for more than 50 years and only stopped attending regularly when her eyesight deteriorated and she felt unsafe coming out on dark evenings. She never complained or made a fuss. The WI were asked to "plant a tree in 1973" Nell, with other members, was pictured in the local paper planting the little apple tree on the green which is still alive and producing fruit.

Nell also designed the WI banner which is framed and hanging in the Village Hall. She won many prizes at the local Flower Show for her artistic and baking skills. She had many interests including the WI, astronomy, cricket local and medieval history. At the top of her list of interests were her faith, music, poetry and listening to the Late Night Shipping Forecast which was her prayer for the night!

Nell will be very much missed by all her family and friends.

Nick Kendrick and Ann Tennant

POST BOX 'BONNETS' AND 'TOPPERS' West End has its very first festive topper!



Royal Mail first began to see these toppers in 2012 over the festive season, although this soon spread to other times of the year such as Easter.

It all started in the north of England - at Easter - when the CEO of the GPO - a lady - asked a WI group to knit or crochet a bonnet or topper for its local post box. She would donate the materials - 3 balls of wool!!! The idea really took off and now all over the country crafty groups of men, women and children meet to design, knit and crochet their ideas to celebrate many events.

Our West End Posties team empty eight post boxes on their rounds and were thrilled to see Winterdown Road had a Christmas Bonnet. A couple of the boxes they empty are quite rare. One is a very early Queen Victoria and the other is a King Edward VIII. We don't have an Olympic and Commonwealth Games Gold one yet, but Thames Ditton has one. I haven't found it yet.

After the refurbishment of the "Prince of Wales" pub a 'Crafty Lady' in West End thought it would be nice to celebrate the occasion by giving the post box a seasonal look. Dressing post boxes is usually done anonymously under the cover of darkness. Should you be interested in joining us, the Winterdown WI group meets every Wednesday at 2.30 in the Prince of Wales.

Ann Tennant



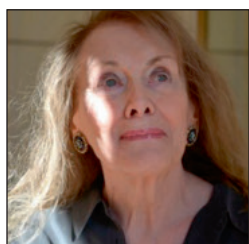
Don Tyzack sent in this delightful image of a Fieldmouse nibbling on a nut in his garden.

HALF A CENTURY OF FRENCH SOCIETY

Maryse Wright (right) gave a fascinating talk on French social history, seen through the writing of Nobel laureate Annie Ernaux

University professor Maryse Wright spoke eloquently (in French, of course) to Esher French Circle on 21 February about the writing of Annie Ernaux, a French author who was awarded the 2022 Nobel Prize for literature 'for the courage and clinical acuity with which she uncovers the roots, estrangements and collective restraints of personal memory'.

Maryse Wright quoted extensively from Annie Ernaux's work to give the French Circle's members a vivid look at French society, from the end of the Second World War until the early 2000s. Her focus was on the autobiographical 'Les Années' ('The Years').



Annie Ernaux

All Esher French Circle's monthly talks are now hybrid - available online (via Zoom), or in person, by going along to West End Village Hall. The programme for the 2024 spring/summer season includes a range of topics:

20 March 2024 *Jean Ferrat et Louis Aragon*
by Vincent Raymond-Barker

17 April 2024 *La Renaissance de Lille*
by Brigitte Thibaut

15 May 2024 *Berthe Morisot*
by Christine Nivet

19 June 2024 *Le Petit train des mineurs de la Mure*
by Thierry Viennois

Esher French Circle offers monthly talks – in French – by native or fluent French speakers, for anybody interested in keeping up or improving their French, in a relaxed and convivial setting.

The meetings are on the third Wednesday of most months and the doors open at 7pm. There is ample opportunity to mingle and chat over a cup of tea or coffee and biscuits before the main talk starts at 7.30pm.

Esher French Circle warmly welcomes anybody with an interest in France and French life, whatever their level of knowledge of the language. More information is available on the Circle's website:

www.cerclefrancais-esher.uk

or from the Circle's secretary: Brigitte Tiller
E brigitte@ptiller.com M 07896 233728

Article and photos: Peter Prowse

DEFIBRILLATOR

OUTSIDE VILLAGE HALL

No training required - anyone can use it
Dial 999 and give the location
You'll be given a key code to open the box
Follow written instructions on the portable unit
Verbal instructions are provided once turned on.

INDY'S SPRING DOG BLOG

Happy days everyone! Spring is definitely in the air and under-paw as all the snowdrops, daffodils and crocuses are bursting into scratch and sniff technicolour. So uplifting! Christmas seems ages ago so although I do hope you all had a marvelous time, I'm looking forward to some good weather with my habitual optimism and enthusiasm.



Now that the Prince of Wales is up and running I am a regular. (Along with my family of course). Check me out with my new best friends from Garson's! In fact I have such a good time there, I was a bit naughty

the other night as my Mummy sent me back home with my girls but I didn't want to go so I dragged my paws all the way up the hill to my house, wolfed down my supper and asked to go out in the garden. So far so good, my plan was coming together. I squeezed through the hedge (they've been meaning to block that gap) and ran all the way back to the pub crossing Hawkshill Way with a lot of good luck. I got a bit frustrated then as I couldn't open the pub door so I ran around in front of the pub window where Mummy and Daddy were sitting until finally Daddy spotted me. I thought they'd think I'd been really clever but I did get a bit of a telling off so I wouldn't advise any of you to try that one. It was a great adventure though and showed them that in future, I'll go home when I'm ready, thank you very much.

While we are on the subject of training your human I thought I'd add a tip occasionally to help you. This one is particularly useful when walking them. Tip #1 - Don't be offended by them putting a lead on you as it stops them wandering off, getting sidetracked by talking to other humans or fiddling with their phone. To remedy their inability to concentrate on your walk, try the following combination:- gently pull on the lead and bangle it around their legs, lay down in the mud, roll with legs in the air, scratch like the fleas are really bugging you and moan. It's a little demeaning but they'll be too embarrassed to stay still.

You might recall, I enjoy finding the lovely commemorative seats in West End and my bench of choice this time is hidden in the woods up on the Ledges. A lovely spot to remember a master carpenter, Brad Beachy.

As you know I do like to stop, chat and play if you're up for it and I had a good repaw with a 7 yr old golden retriever called Orla and 3 Flat Coats like me, Mia, Cassie and a guest, Bertie who was staying over Christmas. So remember, if you see me, do stop and say hello, I'm the black Flat Coated Retriever with the pretty pink collar.



Indy

ST GEORGE'S CHURCH WEST END

As we write this, Spring is finally here and the daffodils and crocuses are out in our Church Garden to announce its arrival.

As you all know, our Rector, Darren, is on adoption leave until November; we are sure you join us in sending good wishes to the family. At this point we would like to acknowledge our thanks to Jonathan (Andrew) for stepping in to ensure that all our services continue to be held both here at St George's and at Christ Church. Jonathan has been supported by our past Rector, William (Allberry), together with visiting clergy from local parishes. We are very grateful to them all.

Although Darren was away from November last year – we managed to hold most of our usual Christmas services at West End. Because of scheduling, we held a combined Crib Service at Christ Church which was very well attended and hopefully many of you managed to take part. The Norwegian congregation held their usual Christmas Eve Service in St George's which was followed by the popular Village Carol Concert that evening. Jonathan presided at our Christmas Day Eucharist, when the church was full - with many visitors as well as our regular congregation. St George's always looks particularly beautiful at Christmas, the plain interior being enhanced by an Advent wreath hanging from the rafters, candles, holly and ivy, a Christmas tree, the crib and numerous flower arrangements.



Naomi Bedford's beautiful Christmas Arrangement. Photo: Naomi Bedford

On the 22nd January St George's was overflowing with relatives, friends and many villagers – who came to pay their respects to Rosalind Wilkes (Moysen). A long-term resident of West End, she was a well-known artist and teacher to many.

In February, Margot Williams (a long-standing member of our congregation) died just 6 weeks

after celebrating her 100th Birthday. She had moved to Falmouth a few years ago to be near two of her daughters, but had lived in Esher for more than 60 years. Many of her contributions to the community, for which she will be remembered were – Teacher for the National Childbirth Trust (NCT Esher branch), Receptionist at the original "Littleton Surgery" in Esher Park Avenue, Pastoral Assistant for Baptisms (at Christ Church/St George's), and a regular on many of our church rotas. Our treasured miniature model of St George's Church (which is above the inside door on entering the church) was made by her youngest daughter Rachel around 40 years ago, and given to us by Margot when she moved. We shall be glad of the opportunity to remember her at a service to be held in Esher in the coming few weeks.

The Church calendar now moves us through Lent, Mothering Sunday, Palm Sunday and into Holy Week and Easter. Services at St George's for this period are as follows:



Margot Williams 100th Birthday

Sunday 10 th March	9am	MOTHERING SUNDAY
Sunday 24 th March	9am	PALM SUNDAY
Sunday 31 st March	9am	EASTER SUNDAY
Sunday 21 st April	9am	ST GEORGE'S DAY (23 rd) with Healing Service

We continue to be closed on any 5th Sunday of the month **EXCEPT FOR EASTER SUNDAY ON 31ST MARCH**. This allows our congregation to join up with our Christ Church congregation - and enjoy the bonus of a beautiful choir. We will be putting a notice on the gate to remind people of the closure.

Please do join us at as many or any of the services that you can. You are always very welcome.

For more information about all our services (at both churches) please do visit our website: <http://www.esherparish.org.uk> Here you can find everything you might want to know about the Parish of Esher including Music on The Green. We put topical notices on the fence outside the church – so please do stop and look to see what's going on as you pass by. Finally – thank you as always for your continued support and we wish you all a very Happy Easter.

Andrea Lindow and Bridget Williams

IN MEMORIAM



**OLIVE JEAN BROWNLIE
(JEANIE)**
11 October 1926—13 December 2023

Jean as she liked to be called, Jeanie to us, was born in 1926 in the family home at Wolsey Road, Esher to parents May (Edith) and Reg Nightingale. She was an only

child but had her childhood friend Joyce living in the same road so she was never short of company.

Jeanie loved being in the workshop with her dad who was a master joiner and spent many hours learning how to replace a sash window and hang wallpaper, which both came in very useful in later life. During the school holidays she would visit her mother's family in Sussex and loved to visit her grandfather who was a Blacksmith.

Jeanie attended the local Church School in Esher and went on to the Kingston Secretarial College where she learnt shorthand and typing and was employed as secretary to one of the partners at Merz & McLellan in Esher. She was a very good organiser which included arranging the Christmas party and drama group. Jeanie worked at Merz & McLellan's until the company relocated, taking up another secretarial position, only leaving when she retired to look after her sick father.

Jeanie loved to travel and it was on one of her cruises where she met her husband John Brownlie who was Scottish and worked as a Civil Engineer. They later married in 1952. They enjoyed playing bridge and golf, and were members of Burhill Golf Club in Hersham. Jeanie was very proud of her hole-in-one there! They moved to West End shortly after they were married and Jeanie was in her element doing the garden with the help of her dad who had won lots of prizes for his dahlias and chrysanthus. Following John's death she did voluntary work at the Princess Alice Hospice. She loved to entertain her friends for afternoon tea when she baked delicious cakes. Not long after John passed away, sadly Jeanie's eyesight began to get worse, her mobility became very restricted and her health deteriorated. However, she was constantly surrounded with friends and family, loving nothing more than cuddles with her adopted great grandchildren, Ottie, Bertie and Polly.



Jean will be greatly missed by all her family and friends.

Jackie and Abi Palmer

WEST END PLAYGROUP



Making children happy since 1975
Ofsted Outstanding for over a decade

Tel: 07395 901584

www.westendplaygroup.com

Registered charity number 1100523



A hearty hello from us all at West End Playgroup! It seems like the merest of moments since we were welcoming shorter days and the promise of Christmas, the twinkling of the festive lights and a jolly fine Nativity play guiding us through the winter months. It is with a degree of pleasure that we are now seeing longer days and the promise that the spring term holds.

Another season to offer a wealth of learning for

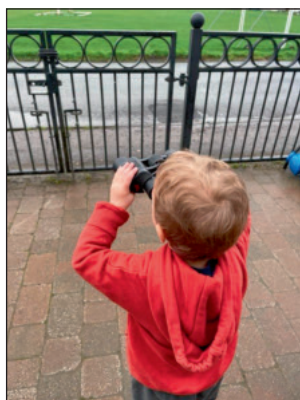
the fabulous children we have the pleasure to share our time with! Since Christmas we have been covering

topics such as dinosaurs, when they traipsed the earth's floor and for how long, what they ate and how they became no more, a good chance to learn big words like 'extinct'.



We then moved onto birds, the different varieties and how they survive the lonely months of winter and how some even migrate' (another big word moment) to sunnier climes for respite from the cold. You may have seen us gazing through our binoculars at the pond to see how many of those bird varieties we can spot.

The departing season has changed our landscape at Forest School too. With the storms came fallen trees in the woods, this is a test to our regular risk assessments but attending Forest School teaches the children a respect for nature that only this firsthand experience can offer. It also tied in nicely with our discussions during our topic on mini beasts as the, slightly dishevelled, woodland floor has plenty of new nooks and crannies for us to investigate. It is a pleasure to see spring flowers blossom in our beautiful surroundings, very much like the children who are growing and learning all the time with their very own zest for life.



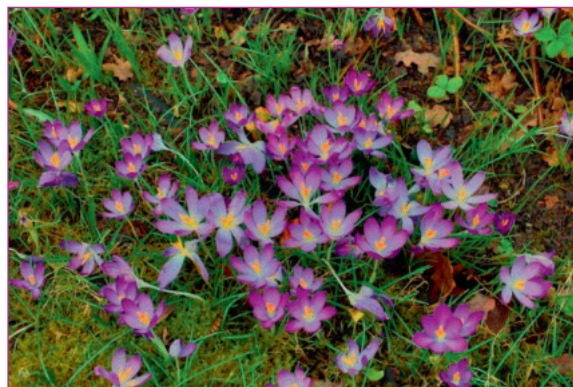
We wish you a happy end to Winter and hope the Spring sees you all in good health.

Article: Jo Weston-Jones

Photos: Jo Weston-Jones and Helen Yates

SPRING AWAKENS

Winter has blossomed to Spring like a soft lullaby... Winter has laid down her chilled bouquet after a long sleep, as now Spring welcomes in a blanket of vibrant blooms.



The zealous optimism of joyous birdsong sets the melodic backdrop echoing around the village that 'Spring has arrived'! Each enthusiastic voice creates a beautiful chaos of notes that climb into the periwinkle sky.

After a weary Winter everything is awake, alive, confident. The atmosphere is electric. The sun glows with renewed passion, providing an exuberant glow. Warm whispers of breeze twist and twirl around the village with the grace of a ballerina. The cascading, emerald foliage of the Willow trees dances gracefully in evident tranquillity. Just below their swaying arms, pristine swans glide effortlessly across the pond with a majesty second to none. Near by, the ducks enthusiastically dip their heads under the water before resurfacing and shaking; each drop of water flies away creating a cataclysm of tiny waves on the otherwise ripple free water!



Throughout each season the stoic trees remain resolutely standing with a comforting stature of strength. Their gnarled bark has acted as a shield to protect them from icy conditions. Now, they tentatively show their hands, revealing shades from bottle green to chartreuse. The canopy allowing venturing welly boots to be cordially invited into the slice of paradise. Each evening the sky is a painter's canvas; skilful strokes of fuchsia and vibrant lemon hues

effortlessly coat the sky. The clouds delightfully receive the last rosy glow of the day. Soon the inky darkness traipses in, placing everything under an ethereal radiance.

Anonymous

Photos: John Sandison and Angela Stockbridge

MEMORIES OF EILEEN POCKLINGTON



Eileen Daphne Poulter was born on 27th March 1931 in Tottenham, Haringey. When growing up she enjoyed ballet dancing and trained as a Typesetter. She was evacuated during the war to Cambridgeshire. Eileen had one sister called Joy who worked at Holton Press, this is also where Charles worked as assistant Art Editor, working on "Eagle Comic" and "Girl" annuals and it was Joy who introduced Charles to Eileen.

After Eileen and Charles married in 1952, they worked together at home producing and publishing a wide range of magazines including Toyota Today and Milestones. They spent many holidays in France as it was their favourite destination and also enjoyed holidays with family in Salcombe, Devon. Everyone was always warmly welcomed to their home and they gave their time generously to family and friends, particularly the young ones. They were everyone's favourite 'Uncle and Aunt'.

When they moved into Claremont Avenue in 1969, they soon became socially active in the community helping to raise funds to pay for fire and flood damage to the Sports Club and the Village Hall. When the renovations were completed, they generously donated towards the wrought iron railings surrounding the patio in the front. Eileen and Charles supported many of the Village events and when it was time for the summer Flower Show were quick to volunteer. Charles would make and set up the stalls and judge the photographs while Eileen would bake and help serve afternoon teas.

Eileen will be sadly missed by her many friends and family especially Ian, her nephew, and his wife Sue and their family.

Text: Ian Colley

Photo above: Eileen on her 90th Birthday

Photo: Ann Tennant.

Right: Eileen's embroidered cushion.

Photo: Roger Marsden



THE PARTY YEARS AT CLAREMONT AVENUE

In 1982 Tim thought that they couldn't just enjoy their garden pond themselves but had to share it with the neighbours. Chrissie and Richard Lloyd lived opposite and had musical contacts and they decided to hold a joint garden party – Eileen and Charles took down their fence so the whole original garden could be enjoyed. They were both keen to be more involved in the next year's party – and so it continued for twenty years with as many as 350 guests in the garden at times. Each year profit was given to the cancer and child charities.

Roger Marsden



Charles and Eileen celebrating their Golden Wedding Anniversary

Photo: Angela Stockbridge

MUSIC ON THE GREEN

January 2024



This excellent trio were the choice of Music Director Stuart Whatton of Christ Church and St George's West End Esher to provide a delightful and varied programme in January for Music on the Green. The flautist was a last minute replacement due to illness. Remarkable!

Photos: Margaret Dane

THE DEVELOPMENT OF THE CT SCANNER GODFREY HOUNSFIELD

In 1966 I was moved to the Central Research Laboratory, where I became Deputy to the Director of the laboratory, Dr Len Broadway. It was my first experience of handling unions. Apart from my father, my ancestors had always worked for themselves. Sole recorded contact with union members was my ancestor Joshua Tyzack. When, joint manager and owner of the Abbeydale works in Sheffield, he was shot at while on his way home. The union thought he was employing too many apprentices and paid a man, to kill him. Joshua fortunately ducked down in his horse drawn phaeton and only suffered a bullet hole in his hat.

Our Research Laboratorys' (CRL) Television Colour Cameras were a great success. The first batch were made by us and they were so successful that the BBC, wanted 40 four tube colour cameras. We offered them for £20,000 each; in those days that was a lot of money. So I, as the workshop controller and Ivan James as the Technical Product Manager took on the order. This product was taken at a fixed price and so our CRL management accounts showed a healthy profit which enabled CRL to fund the early part of the CT Scanner development. The story that it was funded by Beatles profits is rubbish.

Len and I discussed that we had told Godfrey Hounsfield to stop his computer work but the costs kept going up. He had not taken any holiday for a year or two so we sent him on six weeks holiday break, and told the policeman on our gate not to let him in if he came to work during his holiday. Six weeks later he returned to work and came and sat in my office for a chat.



"You know Don," he said, "I've been thinking of an interesting idea." "Suppose you took a single page of a book and imagined that it was possible to shine a very bright light through the edge. Then you collected the light that came out from each position across the bottom of the page. And suppose you did the same thing along the side from one side to the other, and then from the brightness values that came though the edge of the pages, given enough information, you could calculate what was written on the page!"

Not long after that he suggested that his beams of light could be x-rays and have a medical application. Of course Godfrey was a very good mathematician and I had no doubt that he could have solved such multiple equations as would be necessary. We kicked this new project idea of Godfrey's around for a while and eventually Len Broadway said, "I'll tell you what I'll do. You two go up to the Department of Health head office in London with Godfrey's idea. If you can persuade them that the idea is good enough to give you any money for research I will authorize you to open a project on company funds."

So up we went by train from Hayes where we were based. The London office of DHSS in those days - 1968 - was a bit tatty.

Somehow or other the discussion got down to a sum of £2,500, with Clifford Gregory saying they would have to forego a hell of a lot of bandages for that!

Next day Len Broadway called me in, "Well? Get anywhere?" "£2,500", I said. There was a silence, and then, "Oh well I did say I'd authorize it if you got ANY money I suppose!" So that was it. We opened a works order and for a few weeks Godfrey worked alone and then with a young assistant. It was all so casual.

I left the Central Research lab around this time for a promotion, but we had done enough and the group Top management in the form of John Powell had noticed and been convinced of the potential. By this point the machine was undergoing

successful clinical trials with the DHSS. It was a great decision for John Powell, an embryo product of completely unknown potential in a market in which EMI had no presence and no experience.

In five years, he directed the effort which resulted in the manufacture and sale of over 700 scanners worldwide, selling at a peak rate £100M per annum, and generating some £38M of profit for the company.

From virtually a zero base, an embryonic EMI Medical Electronics Ltd had grown to employ 2,500 people and was represented in over a dozen countries.

Godfrey Hounsfield was knighted for his invention and received a **Nobel Prize**.

Article and photos Don Tyzack

REMEMBERING ROSALIND MOYSEN (nee WILKES)

22 August 1941—22 December 2023



Rosalind was born in Walton in 1941, the youngest of two girls. She lived in Hersham until she was nine when the family moved to Riverside Drive in Esher. As a teenager she would explore the West End woods in Esher with

her friends. She studied at Kingston School of Art where she met Roger Wilkes. She was subsequently accepted at the Royal College of Art in London to study Interior Design enjoyed living in Earls Court and the trendy Fulham Road. In the college holidays she travelled through Europe by scooter with Roger. After graduation, Rosalind worked as an interior designer. Shortly after she moved to Esher where she and Roger purchased a small cottage at West End Village. In 1968, their first child, Rufus, was born, followed by Annabel and then Lucinda. All three children were christened at the St George's Church in West End village.

With her friend Vivian she started the first ever West End Village Playgroup in the local Village Hall. After moving to Rose Cottage in West End Lane, she began her painting career while the children were at school and became employed as a part-time art tutor at the Esher and Molesey Adult Education centres. She created an art studio in her garden's old stable building. From there she was able to paint many pieces of artwork, held demonstrations locally and sold her work in Surrey art galleries, London Art Fairs including an exhibition at the Barbican.

Alongside her painting career Rosalind loved cooking for family and friends. She was a caring mother and enjoyed being with her children and five grandchildren. She regularly visited Garsons with her granddaughter, Alice for 'pick your own' and enjoyed gardening and her allotment. She was very much part of her local community, a committee member and then a regular art exhibitor at the annual West End Village flower show.

She worked at Esher Adult Education as an art tutor for 25 years after which she set up her own weekly art classes in her art studio's old stables which she opened up for the borough's 'Open Studios' event once or twice a year. She invited other local artists to exhibit with her there and it ran for 15 years or more.

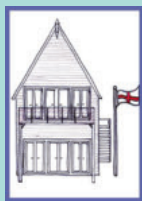
Rosalind's funeral was held at St. Georges Church - over 100 people attended - and afterwards in the Sports and Social Club. She lived in the village for 56 years and enjoyed teaching her students to paint the village pond and its.

The family would like to thank you all for the kind thoughts and messages of support following the passing of Rosalind. She will be truly missed by all her family and friends.

Lucinda Macpherson



THE WEST END SPORTS & SOCIAL CLUB



PLEASE VISIT THE
WESSC WEBSITE FOR
THE CALENDAR OF
EVENTS
www.WESSC.org

WEST END SPORTS & SOCIAL CLUB

SPECIAL



WEST END GOLF SOCIETY



Anyone wishing to join the
WEGS can call
Dave Morgan on
07956 221566

WEST END MOTOR CLUB



WEMC Classic cars at Brooklands Museum, in front of the Aircraft Factory Exhibition Hangar

The members of West End Motor Club continue to add to their numbers at our Tuesday breakfast meetings, generally held at Brooklands Museum, occasionally interspersed with other venues for a change. On the 13th February there was a special gathering at the 'home of Motor Sport' for the 50th anniversary of the first flight of their supersonic aircraft Concorde. Of course, Brooklands is also the 'home of flying', being the scene of early developments in getting off the ground, not mention the sale of the first commercial airline ticket.

If you don't know the history of Brooklands you ought to make time to spend a few hours at the museum, it is a very interesting place. A large turnout of WEMC Classic cars was invited to attend and watch the Concorde nose be lowered and raised to the accompaniment of stirring martial music from a band.



Down

Up

This week we tried another venue for a full English breakfast not far from the Scilly Isles but we will be returning to Brooklands Museum as a staple for the foreseeable.

We are currently working on a small number of other events during the coming year and all are welcome to attend our Tuesday morning 'breakfasts'. Or join us for a pint and a natter on Thursday evenings at the Village Club. Hope to see you there.

Finally readers may be familiar with our fund-raising for Macmillan Cancer Support. Over a 16 year period over £25,000 has been raised by the simple expedient of driving a dozen classic cars (and a few more classic drivers) to various parts of the country and abroad for a weekend lad's jolly where we learn a lot about mechanical things and shake tins at an unsuspecting public to collect cash.

Our 'Pocklington Classic Rallies' were in memory of our 'founder' Austin 7 guru, Charles Pocklington, his widow Eileen always waved us off with coffee and buns on their drive in Claremont Avenue. It was with great sadness that we learned of Eileen's passing away bringing that era to a close.



2006 - Inaugural Pocklington
Classic Rally - start at
Claremont Avenue



2019 - 14th Pocklington Rally
Macmillan Presentation at the
Clubhouse

Report and photos: Roger Brown



*A collection of classic cars line up outside
The Prince of Wales Photo: Ashley Stockbridge*

WEST END SPORTS AND SOCIAL CLUB

WHERE ARE THEY NOW? THE WEESSC BAR TEAM

Shown here on the Yorkshire Moors, Leeds, Uni student Katie McLeod (left) and her colleague were sleeping on the Moors as part of their training!

Katie might be parachuted into action this summer...

There will be more news and updates from the North in our next edition.

*Richard Jenkins,
Bar Manager*



NEW YEAR'S EVE CELEBRATIONS



Partygoers celebrating in the Sports Club on New Year's Eve



Come and Join us for an evening of music with

'CARE IN THE COMMUNITY'
who will be performing at the
West End Sports & Social Club

on
SATURDAY 23rd MARCH from 7.30pm

Fish and chips can be pre-ordered and will be served at 9pm

There was a great deal of community spirit to welcome in the New Year 2024! 'Showman' Steve Denham clad in 'Father Ted's' dazzling blue jacket enjoyed posing with admirer, Alice Austin!

Both members and children danced the night away and enjoyed watching the firework celebrations around the world on the large TV screen as Big Ben struck midnight ringing in the New Year! *Photos: Angela Stockbridge*

PRESIDENT'S PARTY

A huge 'thankyou' to Club Committee members for supporting this event, and to the Bar Staff, Richard, Lee and Dan who worked tirelessly throughout the evening, Ruth Loveridge for doing a sterling job decorating the clubhouse with a Christmas tree and colourful decorations, my helpers with the buffet and festive floral arrangements, all of which contributed to making the party a success. The clubhouse was packed with members who enjoyed singing along to the sounds of 'Care in the Community'. Special thanks to band members Eugene McGuigan (lead guitar), Howard Hope (guitar and vocals), Paul Gibson (guitar and vocals), Dan Robinson (bass guitar), Mark Ward (percussion and washboard), Abi Palmer (vocals), Jaqui Batchelor (vocals) and Geoff Bull (vocals).



THE SURREY & SUSSEX FIRE BRIGADE COME TO THE RESCUE IN WEST END



The Surrey Fire and Rescue Service was recently called to a house in Winterdown Gardens when the immersion heater in the airing cupboard tank was found smouldering. Rosie Master returned from shopping to find smoke in her bathroom and on the landing. Thankfully she did not open the airing cupboard door but immediately called the Fire Brigade. Two fire engines and teams of handsome firemen arrived within minutes and extinguished the fire, using a large circular extractor fan to draw out the smoke.

The incident could have been far worse had it happened during the night or whilst she was away. As you can see above, the airing cupboard was completely burnt inside, along with the shelving and contents. It was a very traumatic event, but the firemen were very professional, efficient, supportive and kind in dealing with the incident, and neighbours rallied round to help and support Rosie who, thankfully, was not injured.

Should you have any concerns for further advice
Visit: www.surreycc.gov.uk/safeandwell

Call free on 0800 085 0767
Text to 07971 691898 with your name, contact number,
Post code, your primary concern, such as smoke alarms,
a disability or safety concern.
RING 999 IN CASE OF EMERGENCY

Photo: Rosie Master

WEST END (ESHER) CRICKET CLUB



CALLING ALL WEST END BAKERS!

Would you be willing to donate a cake to liven up a West End Escher Cricket Match Tea on a Saturday afternoon?

If you can help this season, we'd be very grateful.

Please drop me an email and I'll be in touch:
Ruth Lovering
adminmanager@weecc.co.uk



WEST END ESHER CRICKET CLUB

**WELCOMES JUNIOR MEMBERS
FOR THE 2024 SEASON
U6 - U14 COLTS AND GIRLS**

**JUNIORS INTRODUCTION DAY
FRIDAY 26th APRIL 2024
5.30PM ONWARDS**

The Pavilion
West End Lane,
Esher, KT10 8LF

**COME ALONG AND
JOIN US FOR**

- FUN CRICKET
- BBQ AND DRINKS
TASTER
- REGISTRATION

2024 SEASON INCLUDES

- FRIDAY EVENING TRAINING
- MATCHES THROUGHOUT
- FAMILY MEMBERSHIP TO
WEST END SOCIAL CLUB
- SOCIAL EVENTS

Follow us 
@WestendEsherCC

**Further information Colette Mackintosh
juniorchairman@weecc.co.uk**

Membership registration via TEAMO at weecc.co.uk



GARDEN CENTRE • FARM SHOP • BEVAN'S BUTCHERS
THE ORANGERY TEA HOUSE • PICK YOUR OWN

Garsons

Growing since 1871



www.garsons.co.uk
01372 460181

THE SCURGE OF NITROUS OXIDE CANNISTERS



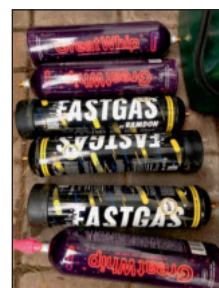
Since writing my last article I am afraid to say that I have gathered even more nitrous oxide cannisters! - 25 in fact, and a further six found in the children's playground opposite the Hospice a few days ago! Many of them still contain gas and I have arranged to have them disposed of as "Hazardous Waste".

However, the good news is that I am now in contact with the Police Liaison Officer at Elmbridge Council who has told me that plain clothed policemen will be operating now, so that is a vast improvement. I have also accompanied Dave Page from EBC on a tour of the fly-tipping areas around Esher - four in all, and he has taken photos and is arranging for the rubbish to be collected - this is a slow process, but some has already been collected, so I feel I am, at long last, getting somewhere.

I am still finding far too many fruit-flavoured illegal vapes and as it has been officially agreed that users are more likely to suffer from anxiety, loneliness and insomnia, and the nicotine content negatively affects brain development, this is extremely worrying.

Anyway, I fight on in the hope that these problems reduce substantially in the coming months."

Article and photos: Wendy Tanqueray



AFC WESTEND

Hello everyone,
I hope that this finds you are all well and surviving the stresses and strains of our current climate. Here is a quick update from the Westend football section to let you know how our Sunday sides are doing in their respective leagues.

As you can appreciate that due to the awful wet weather we've had this year so far, this has meant for that there hasn't been a lot of games taking place on our Westend home pitch, which, even as I write resembles a boating lake. However, we are not the only club to suffer as there a lot of other games being called off in the area this week-end due to heavily flooded pitches.

AFC WESTEND SUNDAY

The Sunday team under the manager-ship of George Nixey and Josh Hughes are having a decent season and are doing well in Division 2 of the



Leatherhead & District Sunday Football League. This Division is a really tough league to be in and is a decent standard of football that suits our boys' style of open play. Currently the team has played 12 games, Won 5, Drawn 2 and Lost 5 and are currently sitting in 4th place in their group.

AFC WESTEND JAGUARS

Our other Sunday side, known as AFC Westend Jaguars under the guidance of Raff Federico and Alex Federico are in Division 3 of the Leatherhead & District Sunday League. The team are doing very well and are currently sitting in 6th place in their respective league having played 12 games, Won 6, Drawn 2 and Lost 4. Again, the football being played is of a very good standard and the team have more than held their own in this group after being promoted last season.

Team Sponsors

As we are now approaching the end of our season football wise, we would like to take the opportunity of thanking Hersham Service Station once again for their continued support and sponsorship throughout 2023/2024.
Best wishes to you all.

Keith AFCWE Secretary

WEST END BRIDGE CLUB

We are a small club which meets every Tuesday afternoon in the Village Hall.

We play friendly bridge and new members are very welcome. We are not competitive and members only enjoy a pleasant afternoon with like-minded people.

Anyone interested, requiring more information should contact Sandra Elms on 01372 466433.



FRIENDS OF THE VILLAGE NEWS

We would like to thank the following 'Friends' of the Village News for their generous donations:

Peter & Naomi Bedford
Ken Berry
Margaret Dane
Gerry Dowling
Donald & Sandra Elms
Mr & Mrs R.V. King
Rob Lowe
A J and B Maddows
Malcolm & Kay Parsons
Mike Purchase
Derek Richardson
David Rolfe
Denis Roux
J & J Stadium
Angela Stockbridge
Simon & Veronica Whittally
And also donors who wish to remain anonymous.

If you would like to become a Friend
Please contact our Treasurer,

derek.richardson@garsons.co.uk

THE VILLAGE NEWS TEAM

We also thank our team of volunteers who regularly help to collate, proof read and distribute the 850 copies of the newsletter to every household in West End and the surrounding areas. Your help is much appreciated.

Sheila Apicella
Alice Austin
Aidan Baker
Peter & Naomi Bedford
Lynn Bezan
David Bramley
Margaret Dane
Don Elms
David Ford
Tricia Fox
Doug & Sue Fryer
Di Gibson
Andrea Lindow
Rob Lowe
Roger Marsden
Rosie Master
Margaret Mazzina
Donald Mungall
Avril Poat
Honour Trotman
Nik & Judy Wilkinson
Bridget Williams

Treasurer: Derek Richardson
Auditor: Peter Heath
Editor: Angela Stockbridge

B & B IN THE VILLAGE



Bed and Breakfast available. All rooms are double bedrooms, made up of king size, and super king beds. The super king can be divided into 2 single beds. All rooms have en-suites and also tea and coffee making facilities, mini fridge and water/juices provided.

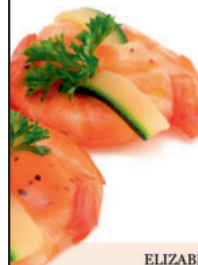
Virgin cable TV and WIFI

A maximum of 2 adults and 3 children per room,

A warm welcome awaits you. For further information call
Edwina Halanen (West End Lane)
On 07721 091184



Bespoke Catering Of Formal & Informal Events



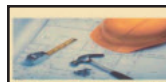
WEDDINGS
MEMORIALS
CELEBRATION PARTIES
CHRISTENINGS
CORPORATE EVENTS
HOUSE WARMING PARTIES
THEMED PARTIES
SMALL PRIVATE FUNCTIONS
DISHS AND PLATTERS

ELIZABETH TRELIVING

HOME COOKING BY ELIZABETH

The Showroom 1 Church Road Great Bookham KT23 3PD

T: 01372 453206 M: 07712 760175 E: ejtreliving@aol.com
Or visit our website www.homecookingdirect.co.uk



Wheatley
OF SONS LIMITED

Established 1850

ESTABLISHED 1850 Telephone - 173 P.O. KINGSTON
BRIDGE ROAD, EAST MOLESEY,
and HIGH STREET, ESHER.

WHEATLEY & SONS,

(Successors to J. Wheatley & Sons, Ltd.)

Builders, Contractors, & House Decorators.

AS, HOT WATER and SANITARY ENGINEERS,
PLUMBERS, GLAZIERS, and BELL HANGERS.

Jobbing Work of every description with Bricklayers, Plasterers,
Carpenters, Cabinet Makers, Painters, Paperhangers, Glaziers,
Gilders, Plumbers, Gas and Bellfitters, Tinmen, Smiths, &c.

Carpets taken up, Beaten and Relaid. Stoves and
Ranges Supplied and Set. Boilers Cleaned. Kitchen
Utensils Restored.

HOUSE DRAINAGE & VENTILATION A SPECIALTY.
DRAIN TESTS AND REPORTS.

PLANS prepared and advice given upon all matters
connected with New Buildings, Additions, Alterations
and Repairs.

FUNERALS FURNISHED in best style and conducted
to any part of the country. Cremations arranged.
Monuments, Brasses, Memorial Windows &c.

HOUSE & ESTATE AGENTS. FIRE & LIFE ASSURANCE.
RENTS COLLECTED. VALUATIONS FOR ALL PURPOSES.

NO JOB TOO SMALL

Telephone 020 8979 5762

Fax: 020 8941 7388

Email:

wheatley_sons@btconnect.com

VILLAGE NEWS WEST END

Please make a diary note:

SUMMER 2024: Friday 21st June

AUTUMN—Friday 30th August

Please contact Angela Stockbridge Email:

angelastockbridge1115@gmail.com 07817 498531 or 01372 460703
The Village News is supported by local organisations including: the
West End Village Club, West End Motor Club, The West End Village
Show Committee, Garsons, Winterdown WI, the late Richard Gale,
West End Village Hall Committee, The former West End Residents'
Association, Advertisers and personal donations. Please note the
newsletter can also be found on the Garsons website www.garsons/
Community Page, the www.AFCWestend website and the West
End Community Facebook page.

We thank you all for your continued support.